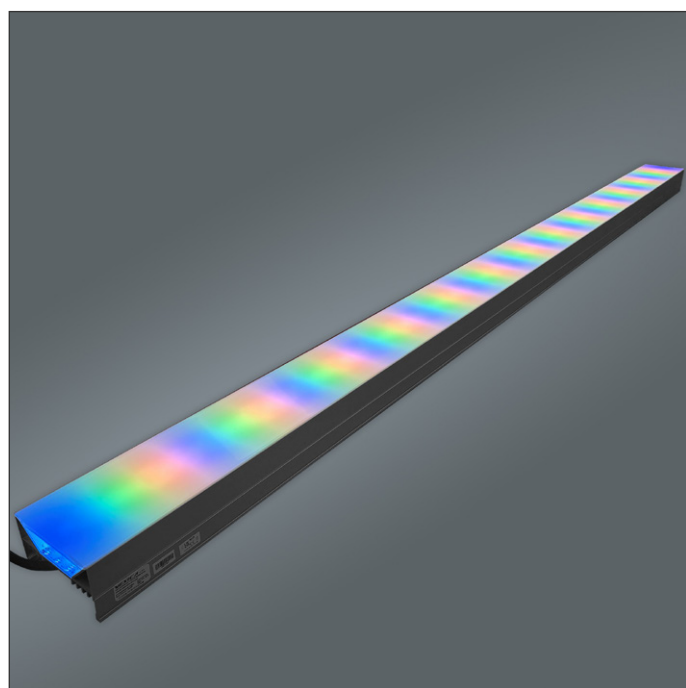
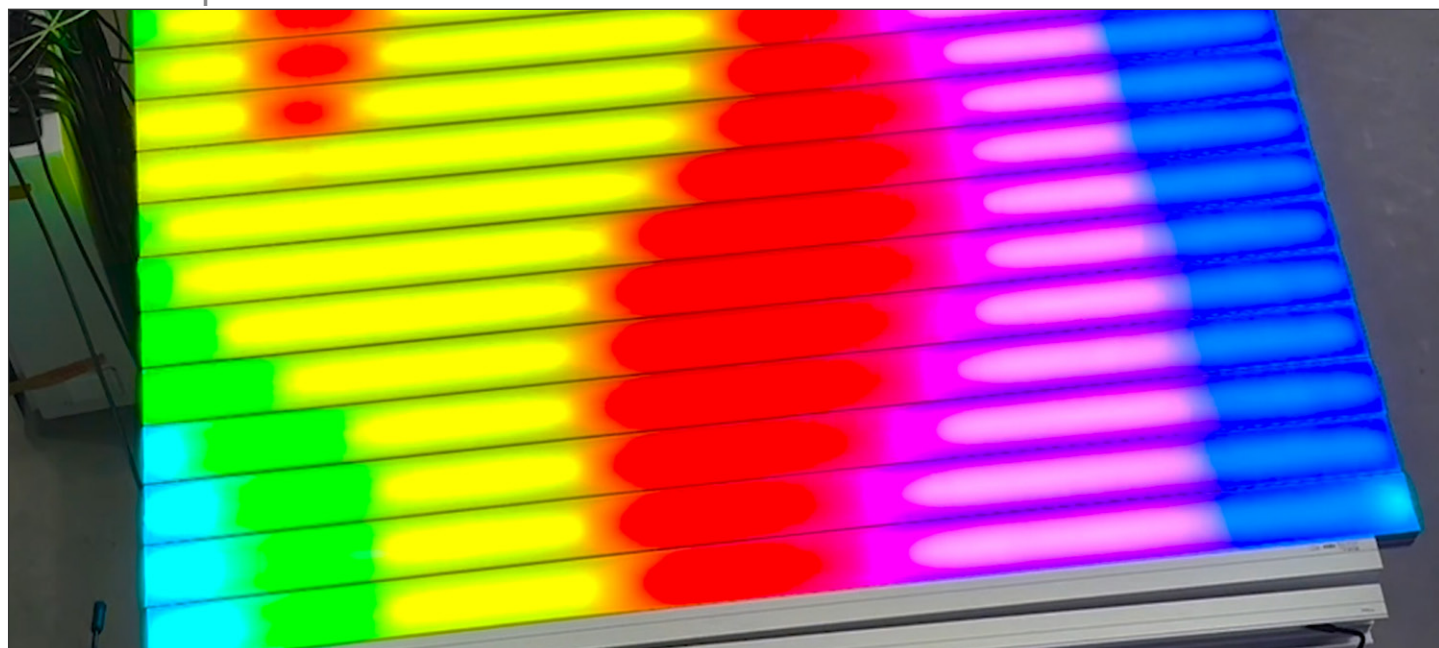


# LUMAERA 116V-H RGBW Dynamic



A 116mm Wide, Resin Encapsulated LED Luminaire with a Diffused Opal Finish and full RGBW Dynamic Capability  
**116mm Wide | Indoor & Outdoor Use**



Remote Driver



## Features & Benefits

### Continuous Linear Light

An 'H' profile with bottom cable entry, allows for easy, hidden cable management. Alongside the zero end-cap design, this allows end-to-end mounting for a continuous linear effect.

### RGBW Dynamic Control

Embedded RGBW dynamic control technology with a 50mm pitch allows for creative lighting effects.

### Resin Encapsulation Technology

Luminaires encapsulated in polyurethane resin to ensure environmental robustness and longevity.

### Linear Homogeneous Output

Diffused opal finish for homogeneous appearance.

### Choose Your Length

Available in a wide range of lengths (205mm - 2005mm) with one driver powering up to 6m.

### Customisable

Speak to your Vexica representative about any specific requests you have for your project.

### Compliance

UKCA, CE, IP67



### 5-Year Warranty

Standard 5-year warranty

ELECTRICAL INFORMATION

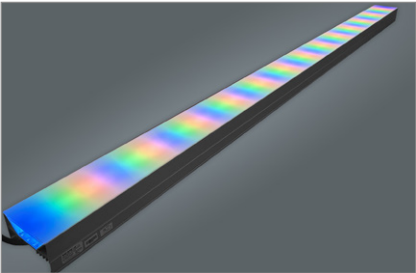
Power Options	50 W/m
Input Voltage	24 VDC (23V Min, 25V Max)
Dimmable	Yes
Connection Type	RST16 IP68
Pixel Pitch	50mm (20 per m)
LED Binning	3 SDCM (White Only)
Maximum Chain Length	6.0 m

PHYSICAL & ENVIRONMENTAL INFORMATION

Housing Colour	<div><div></div><div></div></div> <div>Anodised Aluminium      Contact Us for Special Projects</div>
Finish	<div><div>Extrusion</div><div>Silver Anodised Aluminium</div></div> <div><div>Resin</div><div>Opal Polyurethane</div></div>
Ambient Operating Temperature	-10°C to +50°C
Ambient Storage Temperature	-30°C to +85°C
IP Rating	IP67
IK Rating	IK05
Weight	5.0 kg/m

LED CCT/COLOUR OPTIONS

DYNAMIC COLOUR  
RGBW LED Dynamic Pixels

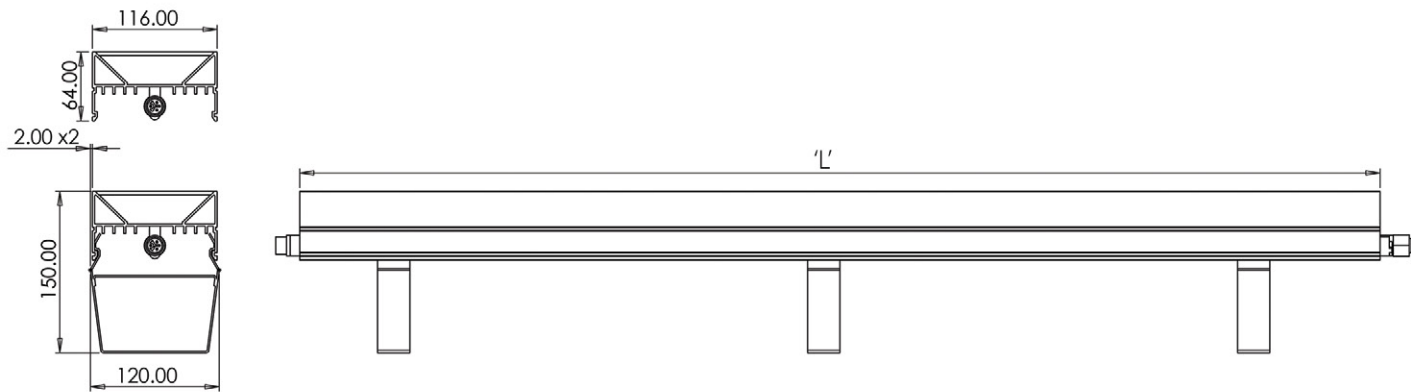


**NOTE**

RGBW control is split across 4 channels, with each capable of 25% of the luminaire maximum power rating. When all 4 channels are at 100% the luminaire maximum output will be achieved.

Must be used in conjunction with Vexica HybridDrive6 driver plus PSU. Max cable length from driver to first fitting is 1m, any extensions will require additional equipment. Contact your Vexica rep for details.

PRODUCT DIMENSIONS

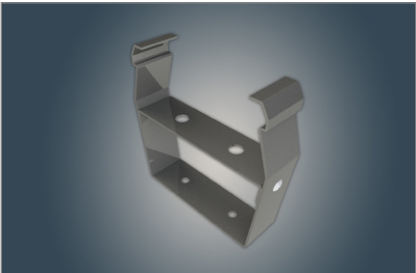


LENGTH (L) OPTIONS

Product	Minimum Length (mm)	Maximum Length (mm)	Length Increments (mm)	Length Options (mm)
Lumaera 116V-H	205	2005	200	205, 405, 605, 805, 1005, 1205, 1405, 1605, 1805, 2005

MOUNTING OPTIONS

SURFACE MOUNT BRACKET  
150mm to Front Face of Luminaire,  
Rear Attachment



ORDER CODE: 023789

PRODUCT CODE GENERATOR

Project Name

1) FIXTURE & OUTPUT TYPE

PRODUCT	WIDTH	PROFILE
VEX-LUMAERA	116V	H
Lumaera Linear LED Exterior Luminaire.	116V116mm 'V' Type	H H Profile (Rear Cable Entry)

2) LUMINAIRE LENGTH (Select For Chosen Width & Optic)

CCT/LED COLOUR	LENGTH
RGBW-DYN-3000K	
RGBW-DYN-3000K RGBW Dynamic (3000K)	205205mm
	405405mm
	605605mm
	805805mm
	10051005mm
	12051205mm
	14051405mm
	16051605mm
	18051805mm
	20052005mm

3) FIXTURE POWER & IP RATING

POWER OPTION	IP RATING	BEAM ANGLE
50W	IP67	DIF
50W50W/m	IP67Water & Dust Proof Suitable for outdoor use	DIFDiffused Opal Finish with Homogeneous Output

PRODUCT CODE:

EXAMPLE: VEX - LUMAERA - 116V - H - RGBW - DYN - 3000K - 1005 - 50W - IP67 - DIF

STANDARDS & CERTIFICATIONS

Compliance

Standard Marks



Environmental Suitability

Sustainability

Responsibly manufactured from materials that are free from 'Red List' chemicals

Recyclable

Partially recyclable. Anodized aluminium parts are fully recyclable at end of life.

Reliability

Manufacturing

All Vexica products are manufactured in our UK-based factory using components sourced from internationally recognised 'tier 1' suppliers

Quality Assurance

Each product is designed and manufactured for reliability and each batch undergoes thorough quality assurance testing

Warranty & Terms

Terms & Conditions

Warranty Registration

For details on our warranty and business terms, please click or scan the QR Code.

Notes

