

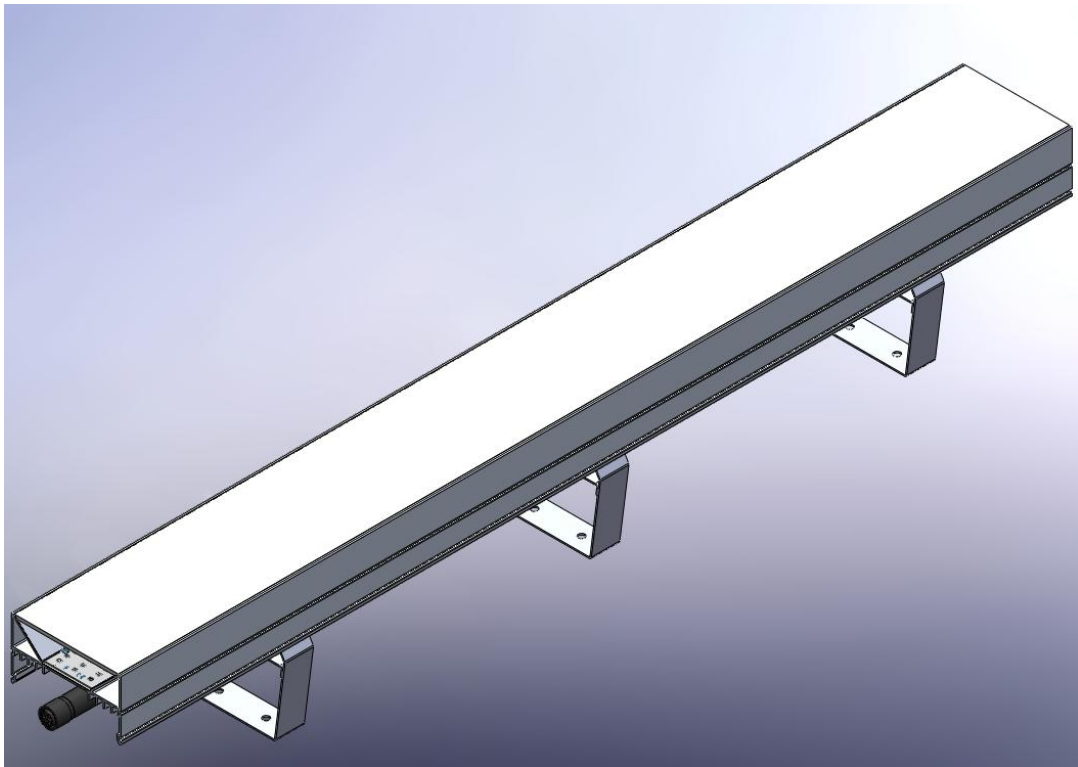


---

# VEX-LUMAERA-116

## On-Site Manual

---



**Please ensure you have read the following instructions thoroughly and can undertake the required actions before commencing installation.**

**If you have any queries, please consult our Technical Support Department before proceeding.**

THE VEXICA GROUP LIMITED  
TYPHOON HOUSE, MOXON WAY, SHERBURN-IN-ELMET, LEEDS, LS25 6FB

## Contents

Scope.....	2
Revision History .....	2
Installation Instructions: .....	3
1.    Installing Fixing bracket .....	3
2.    Installing luminaire .....	4
3.    Removing luminaire .....	4
Wiring.....	5
RST16 Connector - RGBW-DYNAMIC .....	5
Extending Vexica Standard Input Cables .....	6
Cautions: .....	7

## Scope

This manual will detail the installation of a VEX-LUMAERA-116V-H-RGBW-DYN

## Revision History

Rev	Date	Comment	Author
A	21/05/2025	First release	MA

## Approved By

Person	Date	Signature
Technical Director	21/05/2025	JV

## Installation Instructions:

Please read these instructions carefully before installation and make sure you fully understand them. Pay attention to how the luminaire is wired. If you require any further guidance, please contact Vexica.

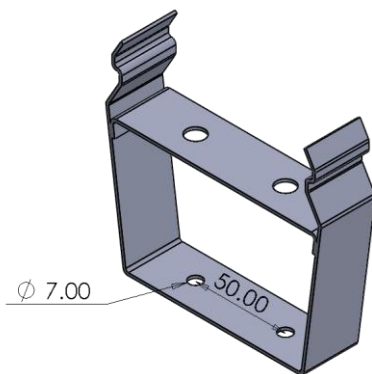


**WARNING!** Risk of electrical shock. Disconnect power before servicing or installation.

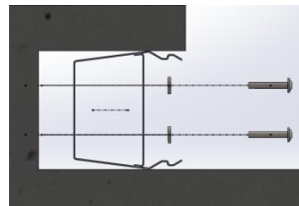
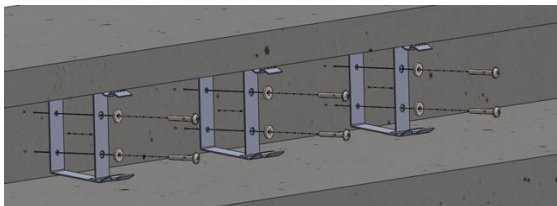
### 1. Installing Fixing bracket

Fix the clip bracket into place required surface using appropriate fixings (Vexica do not provide these as the type and size depends on the surface luminaire is mounted to). Ensure the mounting brackets are installed in line with each other to enable the product to be clipped in quickly, use 3 brackets per metre.

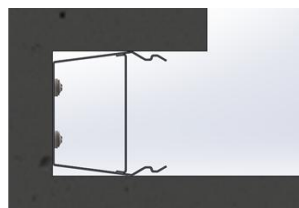
1.1 For reference: Clip clearance hole size 7mm, 50mm centres



1.2



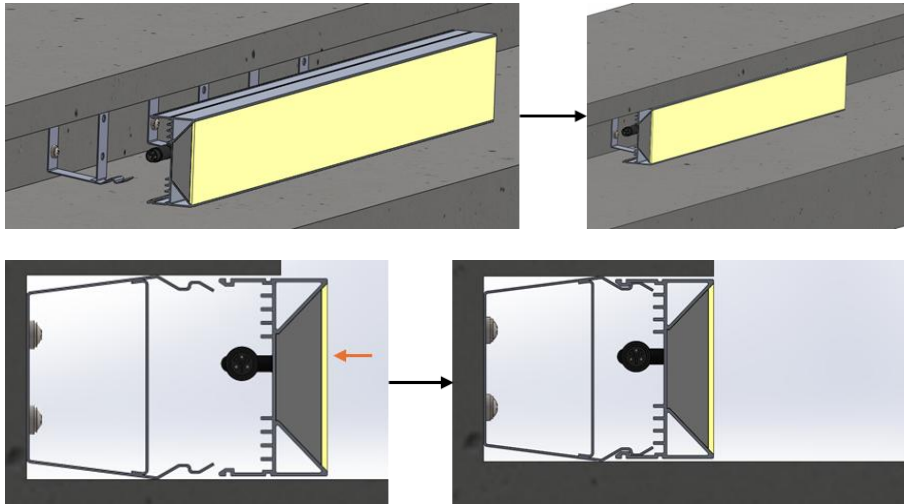
1.3



## 2. Installing luminaire

Push luminaires firmly into mounting brackets until locked into position.

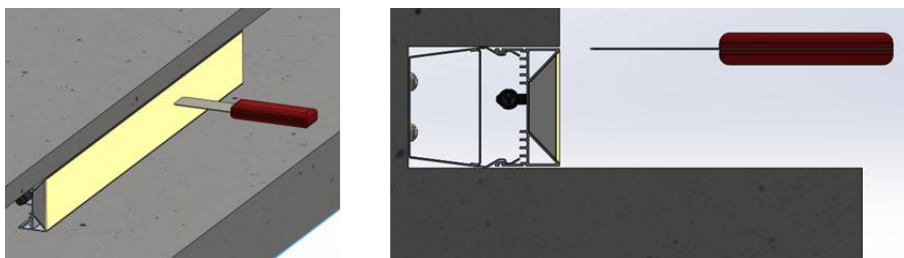
### 2.1



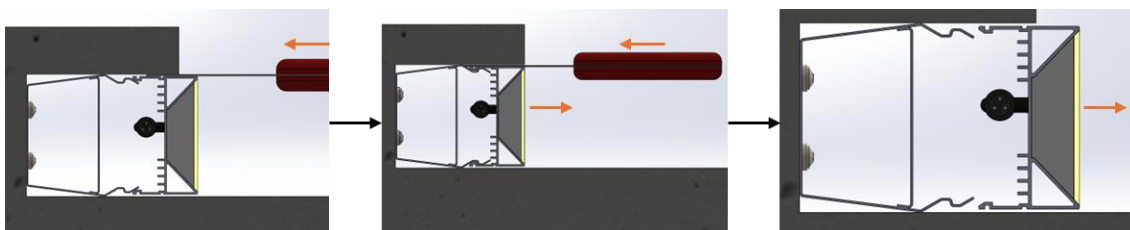
## 3. Removing luminaire

Slide 1-2mm plate / tool into gap adjacent to luminaire in-line with clips to release luminaire.

### 3.1



### 3.2



## Wiring



**WARNING!** Risk of electrical shock. Disconnect power before servicing or installation.

If multiple units are to be connected in a “Daisy Chain” the maximum length Daisy Chain should not exceed **6m**.

**Note: 4-channel pixels are every 50mm, therefore a 6m run is approximately 1 DMX universe.**

Insert terminator into the last luminaire in the “Daisy Chain” to retain IP rating.

Connect starter cable to the first fitting in the “Daisy Chain” and the LED Driver following the appropriate table below:

### RST16 Connector - RGBW-DYNAMIC

Driver	Input Cable Colour
+24VDC	BROWN
DATA IN	YELLOW / GREEN
GND	BLUE



**WITH ALL RGB/RGBW -DYNAMIC FITTINGS THE STARTER CABLE MUST NOT EXCEED 1 METRE.**



Extension cable CSA and length should be calculated to ensure the voltage to the luminaire does not drop below that specified in the datasheet. The installer must use appropriate IP rated connectors for any extensions to retain warranty (refer to page 6 for more information on extending cables).

**DO NOT REVERSE POLARITY**

**DO NOT EXCEED THE MAXIMUM RUN LENGTH OF 6 METRES**

## Extending Vexica Standard Input Cables

When extending cables or making any connections on-site always ensure the connection has an appropriate IP rating.

**Do Not** extend Dynamic starter cables without using a Vexica approved Transmitter/Receiver module to ensure smooth playback of data.

**Cautions:**

**PLEASE TAKE NOTE OF LUMINAIRE AND DRIVER INGRESS PROTECTION RATING WHEN DECIDING LOCATION**

**MAKE SURE ALL CONNECTIONS MADE ARE TIGHT WITH NO LOOSE STRANDS AND WITH APPROPRIATE IP RATING.**

**DO NOT HOT PLUG OR REVERSE POLARITY.**

**ALWAYS ALLOW SUFFICIENT SLACK ON THE SUPPLY CABLE TO REMOVE LUMINAIRE FROM ITS POSITION FOR ANY FURTHER MAINTENANCE**

**MAKE SURE SUPPLY CABLE IS NOT IN CONTACT WITH ANY SHARP OBJECTS DO NOT LEAVE CABLE OR ANY CONNECTOR EXPOSED TO RAIN/MOISTURE FOR ANY PERIOD.**

## **CAUTION!**

- *All images are representative and may not be of the actual product supplied depending on options specified when ordering.*
- *Avoid staring directly into the light beam.*
- *A certified electrician should install the product following local regulations.*
- *Take extreme care when working with mains voltages.*
- *There are no user serviceable parts inside this unit. Do not attempt any repairs yourself, doing so will void your manufactures warranty.*
- *During operation, the housing may become hot, avoid touching the unit with bare hands while in use.*
- *Do not allow the product to operate in ambient temperatures above the maximum ambient stated on the datasheet; doing so will void any warranty.*
- *Do not use aggressive cleaning agents! Any warranty will not cover any chemical damage.*
- **DO NOT "HOT PLUG" THE LED FITTINGS OR DRIVERS AS THIS WILL INVALIDATE THE WARRANTY!**