

## INSTALLATION GUIDE FOR VEX-FLEXI-LINE-3D-MAX



**Please ensure you have read the following instructions thoroughly and can undertake the required actions before commencing installation.**

**If you have any queries, please consult the Vexica Technical Support Department before proceeding.**

## Contents

Scope.....	2
Revision History .....	2
Installation & Accessories .....	3
Notes:.....	3
Bending / Twisting limitations .....	3
SURFACE MOUNTING CLIP.....	3
RIGID CHANNEL.....	3
3D FLEXIBLE CHANNEL .....	4
Wiring information.....	5
RGBW .....	5
Extending Cables.....	6
Cautions .....	6

## Scope

This manual will detail the wiring connection of a VEX-FLEXI-LINE-360 luminaire.

## Revision History

Rev	Date	Comment	Author
A	22/04/2025	Document created	MA
B	24/09/2025	Clip detail added	LG

## Approved By

Person	Date	Signature

## Installation

Please read these instructions carefully before installation and make sure you fully understand them. Pay attention to how the luminaire is wired. If you require any further guidance, please contact Vexica.

**Do not install when the luminaire is powered on.**

## Installation & Accessories

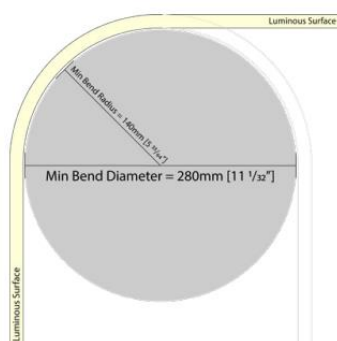
### Notes:

- 2 people or more should install lengths >1.2m
- Do not allow lengths >0.6m to become unsupported during installation

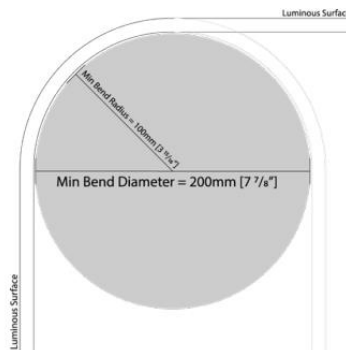
## Bending / Twisting limitations

### Minimum Bend Radius

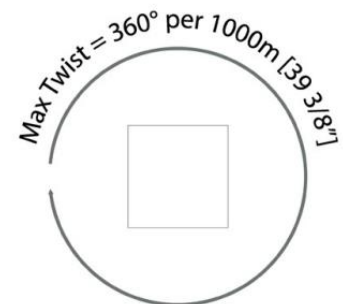
Minimum 'Side' Bend Radius



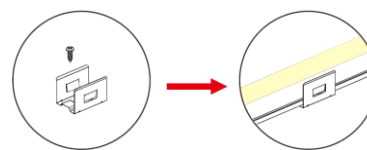
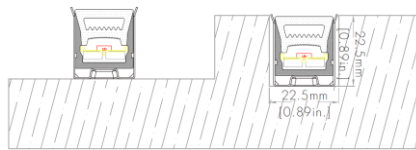
Minimum 'Top' Bend Radius



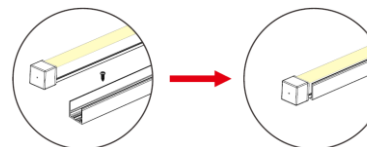
Maximum Longitudinal Twist



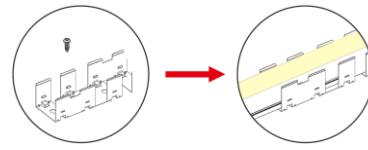
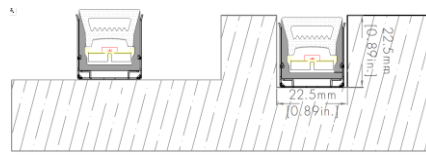
## SURFACE MOUNTING CLIP



## RIGID CHANNEL



### 3D FLEXIBLE CHANNEL



## Wiring information

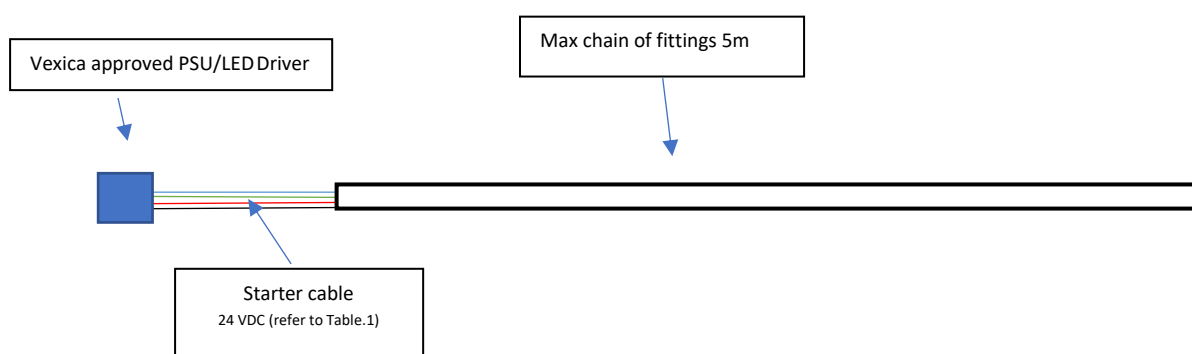
Securely mount PSU/LED driver and connect starter cable following the colour coding:

Refer to datasheet for maximum daisy chain length.

## RGBW

White	WHITE GND
Red	RED GND
Green	GREEN GND
Blue	BLUE GND
Black	+24 VDC

Table 1



Extension cable CSA and length should be calculated to ensure the voltage to the luminaire does not drop below that specified in the datasheet. The installer must use appropriate IP rated connectors for any extensions to retain warranty.

**DO NOT REVERSE POLARITY**

**DO NOT EXCEED THE MAXIMUM RUN LENGTH OF FIVE METERS**

## Extending Cables

Input wires may be wired directly to PSU or extended via connectors/junction boxes (not supplied)

BEFORE WIRING, ENSURE THERE IS NO POWER TO THE PSU. NEVER 'HOT PLUG' LEDS

**EXTENSION WIRES TO THE PSU MUST BE OF APPROPRIATE GAUGE/CSA TO ENSURE VOLTAGE DROP DOES NOT RESULT IN OPERATING THE LUMINAIRE OUTSIDE OF THE SPECIFIED VOLTAGE RANGE**

See datasheet for voltage specification

## Cautions

- Always handle luminaires with care, ensuring any input, output or connecting cables are not subjected to undue force which may result in irreparable damage.
- Please take note of luminaire and driver ingress protection rating when deciding location
- Make sure all connections made are tight with no loose strands and with appropriate IP rating.
- Do not hot plug or reverse polarity.
- Always allow sufficient slack on the supply cable to remove luminaire from its position for any further maintenance
- Make sure supply cable is not in contact with any sharp objects do not leave cable or any connector exposed to rain/moisture for any period.
- All images are representative and may not be of the actual product supplied depending on options specified when ordering.
- Avoid staring directly into the light beam.
- The product should be installed by a certified electrician and following local regulations.
- Take extreme care when working with mains voltages.
- There are no user-serviceable parts inside this unit. Do not attempt any repairs yourself, doing so will void your manufactures warranty.
- During operation, the housing may become hot, avoid touching the unit with bare hands while in use.
- Do not allow the product to operate in ambient temperatures above the maximum ambient stated on the datasheet; doing so will void any warranty.
- Do not use aggressive cleaning agents! Warranty will not cover any chemical damage.