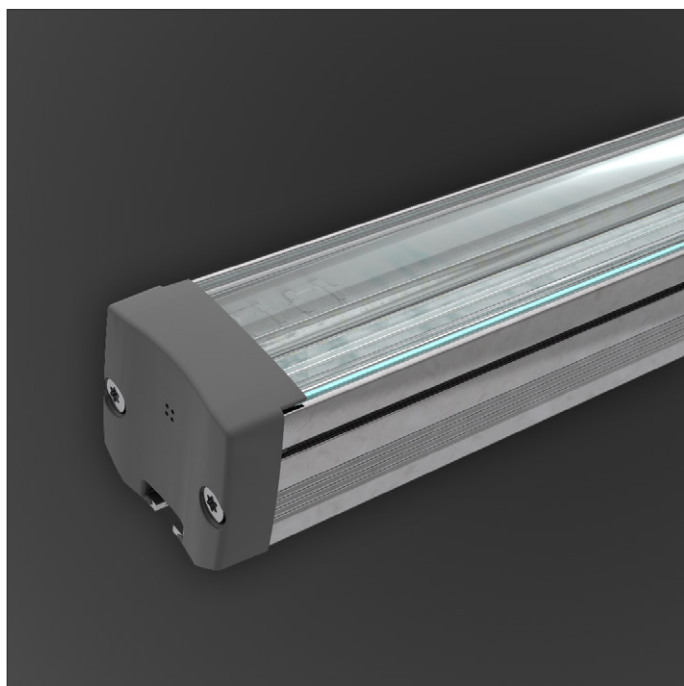


# OPTI-GRAZE



Wall-Grazing LED Luminaire with Linear Optics  
Outdoor & Indoor Use



Remote Driver



## Features & Benefits

### Linear Wall Grazing

Unique outdoor continuous linear optic for uninterrupted wall grazing effect.

### Broad Range of Colour Options

Static White, RGB & RGBW static and dynamic options are available at CRI 80, 90 & 95. For availability per model, please see the relevant section of this guide.

### Durable Construction

A high-grade aluminium body houses a UV stable polycarbonate optical layer sealed against water ingress.

### Multiple Beamshapes

Available with selection of beam configurations.

### Multiple Lengths

Available in a variety of lengths in 50 or 100mm increments depending on colour option.

### Customisable

Speak to your Vexica representative about any specific requests you have for your project

### Compliance

UKCA, CE, RoHS, IP65

### 5-Year Warranty

Standard 5-year warranty, L70 (Static White) @ ~70,000 hours.

LIGHT OUTPUT INFORMATION

Efficacy (lm/W)

		Static White							RGB			RGBW			
Fixture Type	Power Output	2200K	2500K	2700K	3000K	3500K	4000K	Max (White)	Red	Green	Blue	Red	Green	Blue	3000K
Opti-Graze	15 W/m	68	68	72	73	74	75	39	23	61	12	18	73	13	69

Luminaire Lumen Output (lm/m)

		Static White <sup>1</sup>							RGB <sup>1</sup>			RGBW <sup>1</sup>			
Fixture Type	Power Output	2200K	2500K	2700K	3000K	3500K	4000K	Max (White)	Red	Green	Blue	Red	Green	Blue	3000K
Opti-Graze	15 W/m	1015	1015	1074	1093	1113	1132	586	117	306	59	70	273	48	269

The values above are specified at CRI = 80  
For CRI = 90 reduce by 10%; for CRI = 95 reduce by 20%  
If the data that you require is missing, please contact your Vexica representative



<sup>1</sup> Lumen output values vary depending on beam angle selected

Vexica run regular development cycles, continuously optimising and balancing product specifications to best suit our customers. All information therefore, is intended as a guide and specifications may change on occasion without notice or announcement. Technical data is measured under controlled conditions, expected performance is within +/- 10% of advertised figures. Luminaire output stated is actual value from the luminaire itself. Information provided above is intended as a description of the product and shall not be used in the form of any contract.

ELECTRICAL INFORMATION

Power Options	15W/m
Input Voltage	24 VDC (23V Min, 25V Max)
Dimmable	Yes
Connection Type	Circular Connector
Cable Entry/Exit	End (Input Only Option Available on Request)
LED Binning	3 SDCM (White Only)
Maximum Chain Length	4.8m

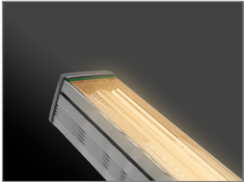
PHYSICAL & ENVIRONMENTAL INFORMATION

Housing Colour	 
	Anodised Aluminium      Contact Us for Special Projects

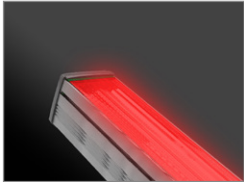
Finish	Extrusion	Silver Anodised Aluminium
	Optic	UV Stabilised Polycarbonate
Ambient Operating Temperature		-10°C to +50°C
Ambient Storage Temperature		-30°C to +85°C
IP Rating		IP65
IK Rating		IK05
Weight		0.945 kg/m

LED CCT/COLOUR OPTIONS

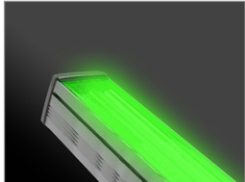
**STATIC WHITE**  
2200K, 2500K, 2700K, 3000K,  
3500K, 4000K



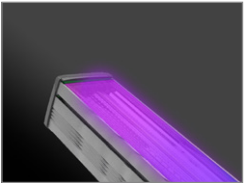
**TUNABLE COLOUR<sup>a</sup>**  
RGB LED Colour Mixing



**TUNABLE COLOUR + 3000K<sup>c</sup>**  
RGBW LED Colour Mixing

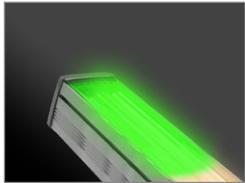


**DYNAMIC COLOUR<sup>b</sup>**  
RGB LED Dynamic Pixels



Pixel Pitch (mm)	Pixel Density (px/m)
100	10

**DYNAMIC COLOUR<sup>b</sup>**  
RGBW LED Dynamic Pixels



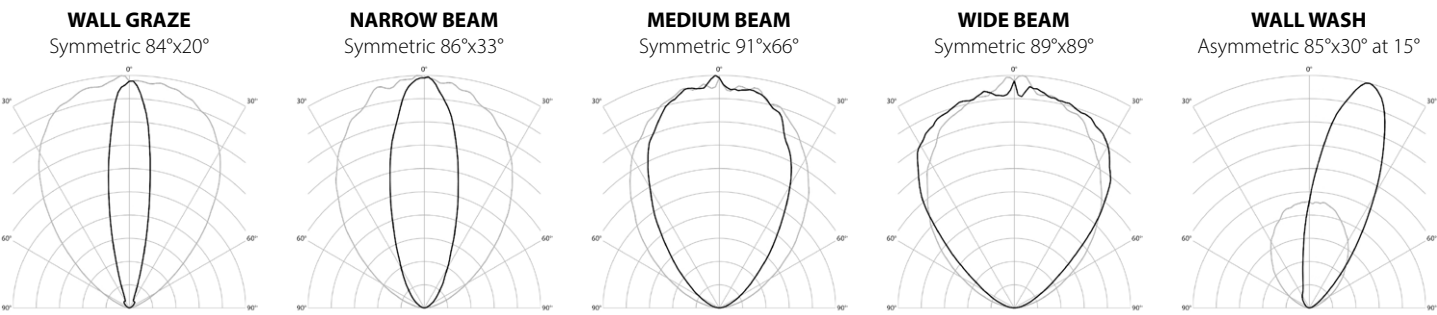
Pixel Pitch (mm)	Pixel Density (px/m)
100	10

LENGTH (L) OPTIONS

Product	LED Colour	Minimum Length (mm)	Maximum Length (mm)	Length Increments (mm)	Length Options (mm)
Opti-Graze	Static White	150	1200	50	150, 200, 250, 300, 350, 400, 450, 500, 550, 600, 650, 700, 750, 800, 850, 900, 950, 1000, 1050, 1100, 1150, 1200
	RGB			100	150, 250, 350, 450, 550, 650, 750, 850, 950, 1050, 1150
	RGB Dynamic RGBW				

Lengths longer than 1200mm are available on request as a special consideration.  
Please consult your Vexica representative for more information.

BEAMSHAPE SELECTION



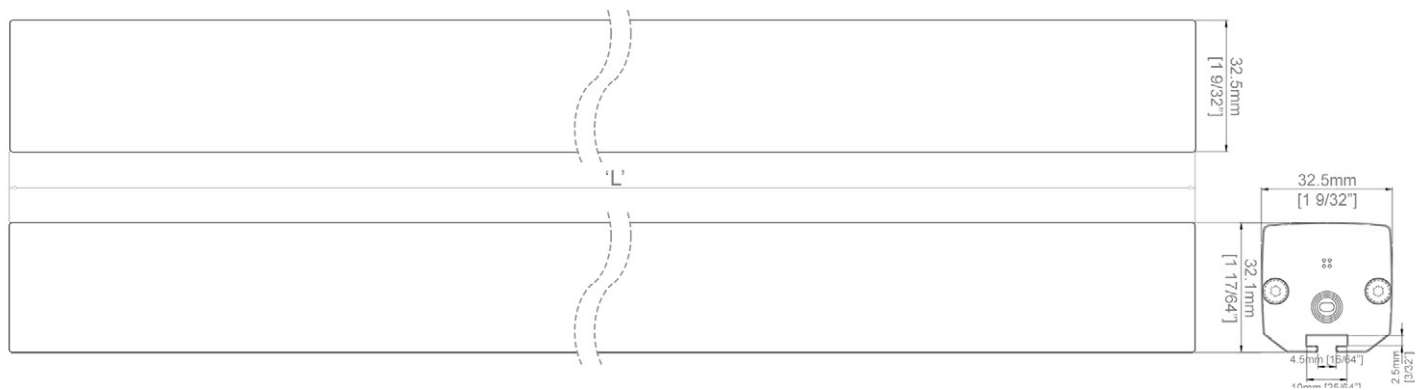
Please note that not all beam shapes are available with each colour option.  
Please consult your Vexica representative for more information.

<sup>a</sup> Each colour channel represents 1/3 of the maximum luminaire power output. When all channels are at 100% the luminaire maximum output will be achieved.

<sup>b</sup> Must be used in conjunction with a Vexica HybridDrive6 driver and PSU. Max cable length from driver to first fitting is 1m, any extensions will require additional equipment. Contact your Vexica rep for details.

<sup>c</sup> RGBW control is split across 4 channels, with each capable of 25% of the luminaire maximum power rating. When all 4 channels are at 100% the luminaire maximum output will be achieved.

PRODUCT DIMENSIONS



Maximum Width	32.5mm
Maximum Height	32.1mm
Length	50mm or 100mm Increments + 50mm (Min=150mm, Max=1200mm)

FIXTURE ORDERING

Project Name

1) FIXTURE & OUTPUT TYPE

PRODUCT	CCT/LED Colour	
VEX-OPTI-GRAZE-TIR		
Opti-Graze is a Rigid, Exterior-Grade LED Luminaire with Linear Optics.	2200K	2200K
	2500K	2500K
	2700K	2700K
	3000K	3000K
	3500K	3500K
	4000K	4000K
	RGB	RGB
	RGB-DYN	RGB Dynamic
	RGBW-3000K	RGBW (3000K)
	RGBW-DYN-3000K	RGBW Dynamic (3000K)

2) LUMINAIRE LENGTH (Select For Chosen Type)

LENGTH		
	STATIC WHITE CCT	RGB, RGB-DYN & RGBW
X	Specify Xmm 50mm Intervals + 50mm Minimum = 150mm Maximum = 1200mm	Specify Xmm 100mm Intervals + 50mm Minimum = 150mm Maximum = 1150mm

3) FIXTURE POWER, IP RATING, BEAM PATTERN & RESIN COLOUR

POWER OPTION		IP RATING	BEAM ANGLE*	
15W		IP65		
15W	15W/m	IP65	Water & Dust Proof Suitable for outdoor use	84X20 86X33 91X66 89X89 85X30X15 Symmetric 84° x 20° (Wall Graze) Symmetric 86° x 33° (Narrow Beam) Symmetric 91° x 66° (Medium Beam) Symmetric 89° x 89° (Wide Beam) Asymmetric 30° at 15° (Wall Wash)

\*Please note that not all beam shapes are available with each colour option. Please consult your Vexica representative for more information.

PRODUCT CODE:

EXAMPLE: VEX - OPTI - GRAZE - TIR - 2200K - 1560 - 15W - IP65 - 84X20

STANDARDS & CERTIFICATIONS

Compliance

Standard Marks



Environmental Suitability

Sustainability

Responsibly manufactured from materials that are free from 'Red List' chemicals

Recyclable

Partially recyclable. Extrusion and optics are recyclable at end of life.

Reliability

Manufacturing

All Vexica products are manufactured in our UK-based factory using components sourced from internationally recognised 'tier 1' suppliers

Quality Assurance

Each product is designed and manufactured for reliability and each batch undergoes through quality assurance testing

Warranty & Terms

[Terms & Conditions](#)

[Warranty Registration](#)

For details on our warranty and business terms, please click or scan the QR Code.

Notes

