

VEX BEAM 210

A Contemporary LED Flood Light With A Choice of
Colour Options & Beam Angles

210mm Diameter | Indoor & Outdoor Use



Integrated Driver



Features & Benefits

Robust Construction

A high-quality, powder-coated, die-cast aluminium body and a tempered glass outer lens ensures this luminaire will last.

Pick Your Colour

Available in a choice of static white CCTs, tunable RGBW, or choose the 7 in 1 option (RGBWCLA) for superior colour reproduction with intelligent output balancing.

Beam Angle Selections

Choose from multiple beam angles from an ultra narrow 2.5°, to a wide 60°.

Anti-Glare Accessories

Reduce glare from this luminaire with integrated snoot or honeycomb louvre accessories.

Choose Your Control

Control options for the integrated driver include: On/off, 0-10V PWM, Dali and DMX.

Compliance

UKCA, CE, IP66

5-Year Warranty

Standard 5-year warranty, L70 (Static White) @ >50,000 hours.

LIGHT OUTPUT INFORMATION

Efficacy (lm/W)

		Static White			RGBW ¹				
Fixture Type	Power Output	2700K	3000K	4000K	Max	Red	Green	Blue	White (3000K)
Beam 210	75W	70	75	80	-	-	-	-	-
	100W	-	-	-	45	25	75	10	75

		RGBWCLA (7 in 1) with Output Balancing ²						
Fixture Type	Power Output	Red	Green	Blue	White (3000K)	Cyan	Lime	Amber
Beam 210	100W	20	35	5	40	20	50	25

Luminaire Lumen Output (lm)

		Static White			RGBW ¹				
Fixture Type	Power Output	2700K	3000K	4000K	Max	Red	Green	Blue	White (3000K)
Beam 210	75W	5250	5625	6000	-	-	-	-	-
	100W	-	-	-	4500	625	1875	187	1875

		RGBWCLA (7 in 1) with Output Balancing ²						
Fixture Type	Power Output	Red	Green	Blue	White (3000K)	Cyan	Lime	Amber
Beam 210	100W	570	1000	145	1145	570	1430	715

The white values above are specified at CRI = 80

If the data that you require is missing, please contact your Vexica representative

¹ RGBW consists of 4 channels (Red, Green, Blue & White), each capable of outputting 1/4 of the total luminaire power output. The 'Max' value is taken when all four channels are at 100% and the fixture is running at its maximum power output.

² 7 in 1' with Output Balancing utilises 7 channels (RGBWCLA) of control for superior colour reproduction. Embedded intelligent control maximises the output at any selected colour. The values above represent the maximum possible lumen output per channel. These are not simultaneously achievable due to output balancing technology.

Vexica run regular development cycles, continuously optimising and balancing product specifications to best suit our customers. All information therefore, is intended as a guide and specifications may change on occasion without notice or announcement. Technical data is measured under controlled conditions, expected performance is within +/- 10% of advertised figures. Luminaire output stated is actual value from the luminaire itself. Information provided above is intended as a description of the product and shall not be used in the form of any contract.

LIGHT OUTPUT INFORMATION CONT.

LED Quantity	18	
CRI	80 (White Only)	
LED Binning	3 SDCM (White Only)	
Dimmable	Yes	
Beam Angle	Static White	2.5°, 8°, 12°, 20°, 30°, 45°, 60°, 10°x60°
	RGBW	9°, 15°, 20°, 30°, 45°, 15°x60°
	RGBWCLA	10°, 15°, 20°, 30°, 15°x60°

ELECTRICAL INFORMATION

Power Options	Static White	75W
	RGBW & RGBWCLA	100W
Input Voltage	100 - 305 VAC	
Cable Entry	Rear Feed Entry	
Connection Type	Static White	1m 3-Core Power Cable
	RGBW & RGBWCLA	1m 3-Core Power Cable
		1m 4-Core Signal Cable
Control Method	On/Off (Standard for Static White)	
	0 - 10V	
	DMX (Standard for RGBW & exclusively for RGBWCLA)	
	DALI	

PHYSICAL & ENVIRONMENTAL INFORMATION

Housing Colour	<div></div> Grey (RAL9023)
Finish	Powder Coated Die-Cast Aluminium, Tempered Glass
Ambient Operating Temperature	-20°C to +55°C
Ambient Storage Temperature	-55°C to +70°C
IP Rating	IP66
IK Rating	IK08

LED CCT/COLOUR OPTIONS

STATIC WHITE
2700K, 3000K, 4000K



TUNABLE COLOUR
RGBW



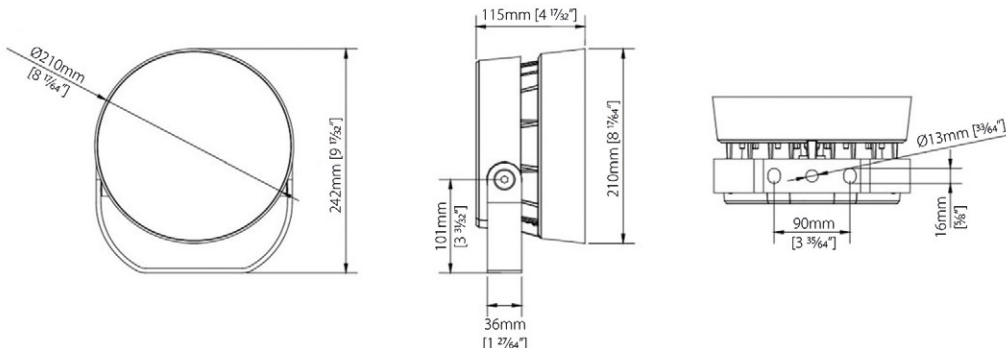
7 IN 1 (WITH OUTPUT BALANCING)
RGBWCLA



7 in 1 control with intelligent output balancing technology allows for superior colour reproduction at any level of dimming. This also ensures the maximum output of the luminaire is available independent of the hue selected.

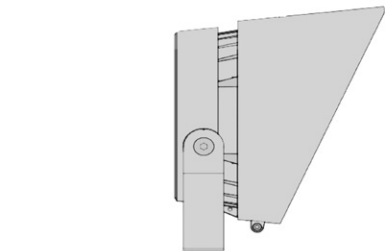
PRODUCT DIMENSIONS

Barrel Diameter (mm)	210
Height (mm)	242
Depth (mm)	115
Weight (kg)	3.4



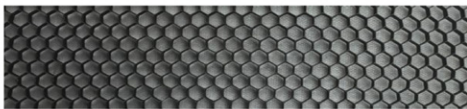
ACCESSORIES

ANTI-GLARE SNOOT
Integrated anti-glare shield for luminaire



ORDER CODE: 025060

HONEYCOMB LOUVRE
Integrated glare reduction honeycomb



ORDER CODE: 025061

FIXTURE ORDERING

Project Name

1) FIXTURE & OUTPUT TYPE

PRODUCT	CCT/LED COLOUR
VEX-BEAM-210	
Vex-Beam 210 is a contemporary exterior LED Flood Light Die-Cast Aluminium Body with Toughened Glass Lens 210mm Diameter,	2700K Static White (2700K) 3000K Static White (3000K) 4000K Static White (3500K) RGBW-3000K RGBW (3000K) RGBWCLA-OB 7 in 1 with Output Balancing (RGBWCLA)

2) POWER & IP RATING

POWER OPTION	IP RATING
	IP66
75W 75W (Static White Only) 100W 100W (RGBW & RGBWCLA)	IP66 Water & Dust Proof Suitable for outdoor use

3) BEAM ANGLE & CONTROL TYPE

BEAM ANGLE				CONTROL TYPE			
STATIC WHITE		RGBW		RGBWCLA		OO	
2.5	2.5°	9	9°	10	10°	0-10V	On/Off (Standard for Static White)
8	8°	15	15°	15	15°	DALI	0-10V PWM Dimming
12	12°	20	20°	20	20°	DMX-512	DALI Controlled Dimming
20	20°	30	30°	30	30°		DMX Controlled Dimming
30	30°	45	45°	15x60	15°x60°		(Standard for RGBW & Only Option for RGBWCLA)
45	45°	15x60	15°x60°				
60	60°						
10x60	10°x60°						

PRODUCT CODE:

EXAMPLE: VEX - BEAM - 210 - 2700K - 75W - IP66 - 60 - DMX - 512

ACCESSORIES

PART NO.	DESCRIPTION	PRODUCT CODE
025060	Integrated Snoot/Hood	VEX-BEAM-210-ACCESSORY-SNOOT
025061	Anti-Glare Honeycomb Louvre	VEX-BEAM-210-ACCESSORY-HONEYCOMB-LOUVRE

STANDARDS & CERTIFICATIONS

Compliance

Standard Marks



Environmental Suitability

Recyclable

Aluminium body recyclable where facilities exist.

Reliability

Quality Assurance

All products are carefully selected and tested by Vexica so that you can be assured of their quality, function and reliability.

Warranty & Terms

Terms & Conditions

Warranty Registration

For details on our warranty and business terms, please click or scan the QR Code.

Notes