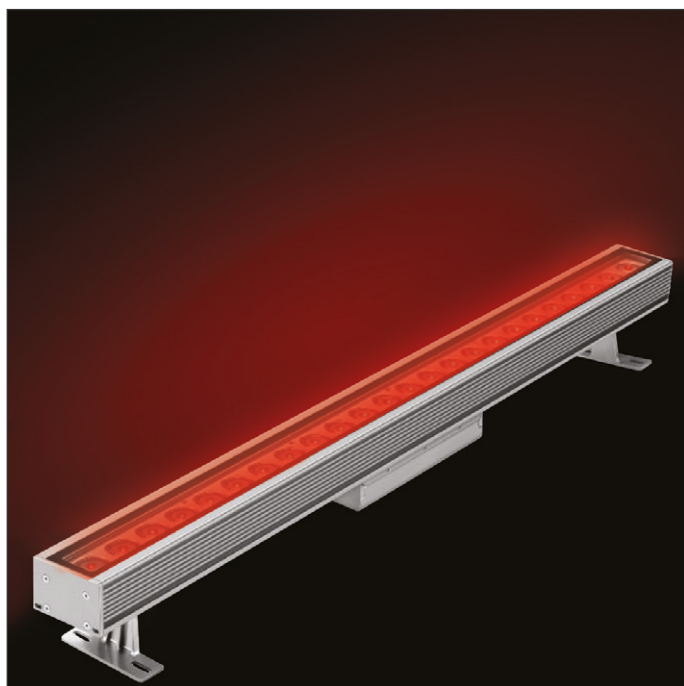
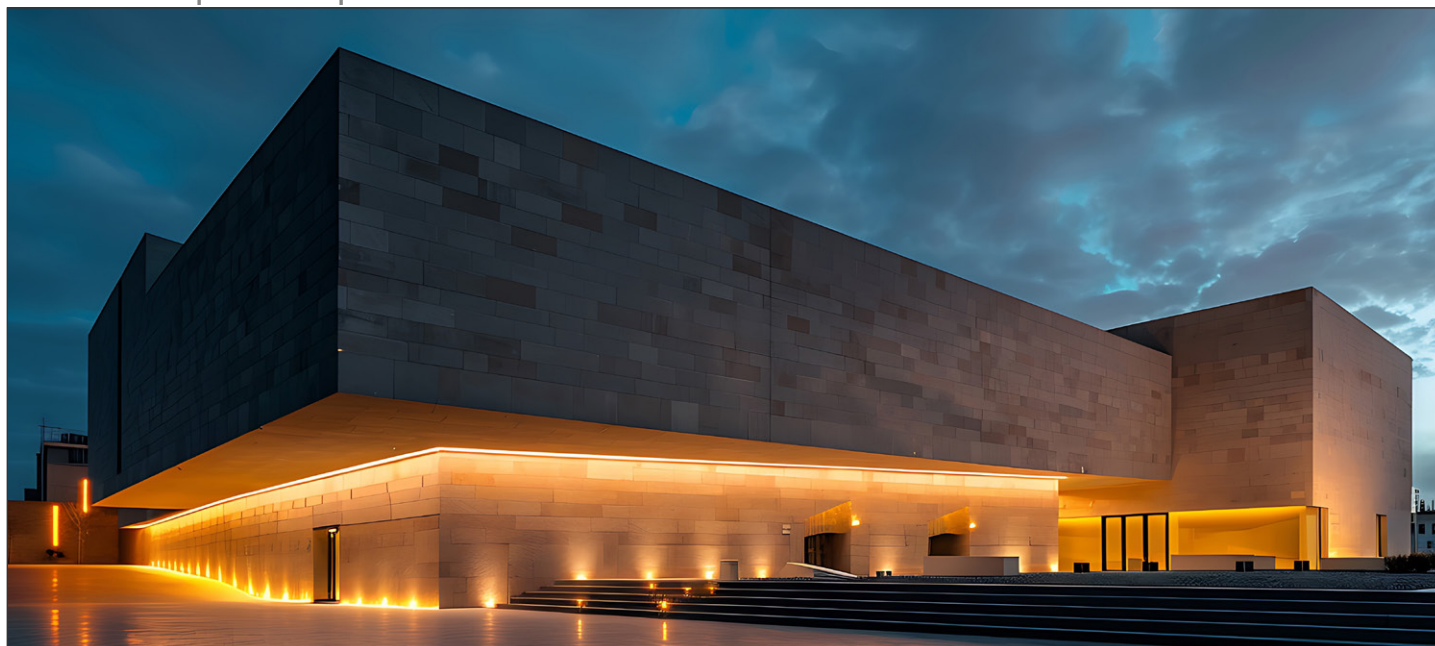


POWER-GRAZE 200

A High-Power LED Wall Graze Light With A Choice of Colour Options & Beam Angles

80mm Width | 200W/m | Indoor & Outdoor Use



Integrated Driver



Features & Benefits

Robust Construction

A high-quality, powder-coated, die-cast aluminium body and a tempered glass outer lens ensures this luminaire will last.

Pick Your Colour

Available in a choice of static white CCTs, tunable RGBW, or choose the 7 in 1 option (RGBWCLA) for superior colour reproduction with intelligent output balancing.

Beam Angle Selections

Choose from multiple beam angles from an ultra narrow 2.5°, to a wide 60°.

Anti-Glare Accessories

Reduce glare from this luminaire with integrated snoot or honeycomb louvre accessories.

Choose Your Control

Control options for the integrated driver include: On/off, 0-10V PWM, Dali and DMX.

Compliance

UKCA, CE, IP66

5-Year Warranty

Standard 5-year warranty, L70 (Static White) @ >50,000 hours.

LIGHT OUTPUT INFORMATION

Efficacy (lm/W)

		Static White			RGBW ¹				
Fixture Type	Power Output	2700K	3000K	4000K	All	Red	Green	Blue	White (3000K)
Power-Graze 200	200W	70	75	80	45	25	75	10	75

		RGBWCLA (7 in 1) with Output Balancing ²						
Fixture Type	Power Output	Red	Green	Blue	White (3000K)	Cyan	Lime	Amber
Power-Graze 200	200W	20	35	5	40	20	50	25

Luminaire Lumen Output (lm/m)

		Static White			RGBW ¹				
Fixture Type	Power Output	2700K	3000K	4000K	All	Red	Green	Blue	White (3000K)
Power-Graze 200	200W	14000	15000	16000	9000	1250	3750	500	3750

		RGBWCLA (7 in 1) with Output Balancing ²						
Fixture Type	Power Output	Red	Green	Blue	White (3000K)	Cyan	Lime	Amber
Power-Graze 200	200W	1145	2000	285	2285	1145	2855	1430

The white values above are specified at CRI = 80

If the data that you require is missing, please contact your Vexica representative

¹ RGBW consists of 4 channels (Red, Green, Blue & White), each capable of outputting 1/4 of the total luminaire power output. The 'Max' value is taken when all four channels are at 100% and the fixture is running at its maximum power output.

² 7 in 1' with Output Balancing utilises 7 channels (RGBWCLA) of control for superior colour reproduction. Embedded intelligent control maximises the output at any selected colour. The values above represent the maximum possible lumen output per channel. These are not simultaneously achievable due to output balancing technology.

Vexica run regular development cycles, continuously optimising and balancing product specifications to best suit our customers. All information therefore, is intended as a guide and specifications may change on occasion without notice or announcement. Technical data is measured under controlled conditions, expected performance is within +/- 10% of advertised figures. Luminaire output stated is actual value from the luminaire itself. Information provided above is intended as a description of the product and shall not be used in the form of any contract.

LIGHT OUTPUT INFORMATION CONT.

LED Quantity	24 per m	
CRI	80 (White Only)	
LED Binning	3 SDCM (White Only)	
Dimmable	Yes	
Beam Angle	Static White	2.5°, 8°, 12°, 20°, 30°, 45°, 60°, 10°x60°
	RGBW	9°, 15°, 20°, 30°, 45°, 15°x60°
	RGBWCLA	10°, 15°, 20°, 30°, 15°x60°

ELECTRICAL INFORMATION

Power Options	200 W/m	
Input Voltage	100 - 305 VAC	
Cable Entry	Rear Feed Entry	
Connection Type	Static White	1m 3-Core Power Cable
	RGBW & RGBWCLA	1m 3-Core Power Cable
		1m 4-Core Signal Cable
Control Method	On/Off (Standard for Static White)	
	0 - 10V	
	DMX (Standard for RGBW & exclusively for RGBWCLA)	
	DALI	

PHYSICAL & ENVIRONMENTAL INFORMATION

Housing Colour	<div></div> <div>Silver</div>
Finish	Anodised Aluminium, Tempered Glass
Ambient Operating Temperature	-20°C to +55°C
Ambient Storage Temperature	-55°C to +70°C
IP Rating	IP66
IK Rating	IK08

LED CCT/COLOUR OPTIONS

STATIC WHITE
2700K, 3000K, 4000K



TUNABLE COLOUR
RGBW



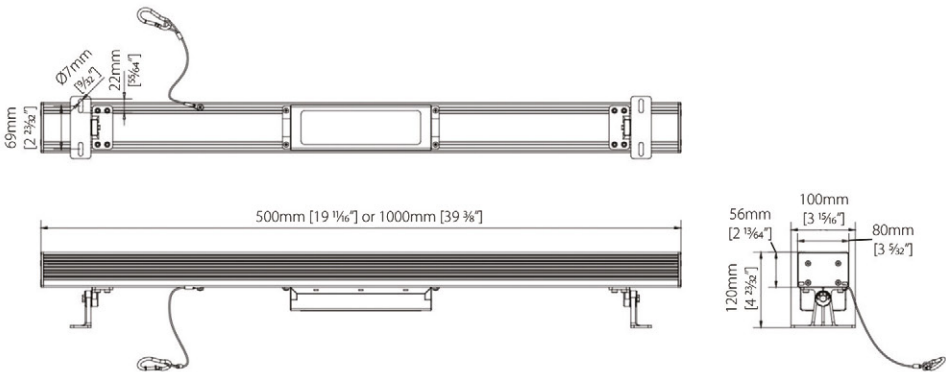
7 IN 1 (WITH OUTPUT BALANCING)
RGBWCLA



7 in 1 control with intelligent output balancing technology allows for superior colour reproduction at any level of dimming. This also ensures the maximum output of the luminaire is available independent of the hue selected.

PRODUCT DIMENSIONS

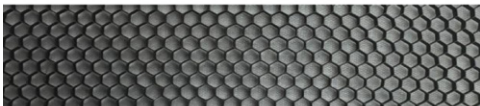
Body Width (mm)	80
Total Width (mm)	100
Height (mm)	120
Length Options (mm)	500, 1000
Weight (kg/m)	6.2



ACCESSORIES

ANTI-GLARE SNOOT
Integrated anti-glare shield for luminaire

HONEYCOMB LOUVRE
Integrated glare reduction honeycomb



ORDER CODE: 025073

ORDER CODE: 025074

FIXTURE ORDERING

Project Name

1) FIXTURE & OUTPUT TYPE

PRODUCT	CCT/LED COLOUR	
VEX-POWER-GRAZE-200		
Power-Graze 200 is a high-powered exterior-grade LED Wall-Grazing Light Die-Cast Aluminium Body with Toughened Glass Lens 80mm Width	2700K 3000K 4000K RGBW-3000K RGBWCLA-OB	Static White (2700K) Static White (3000K) Static White (3500K) RGBW (3000K) 7 in 1 with Output Balancing (RGBWCLA)

2) LENGTH, POWER & IP RATING

LENGTH	POWER OPTION	IP RATING
	200W	IP66
500mm 1000mm	200W 200W/m	IP66 Water & Dust Proof Suitable for outdoor use

3) BEAM ANGLE & CONTROL TYPE

BEAM ANGLE						CONTROL TYPE	
STATIC WHITE		RGBW		RGBWCLA		OO	On/Off (Standard for Static White)
2.5	2.5°	9	9°	10	10°	0-10V	0-10V PWM Dimming
8	8°	15	15°	15	15°	DALI	DALI Controlled Dimming
12	12°	20	20°	20	20°	DMX-512	DMX Controlled Dimming
20	20°	30	30°	30	30°		(Standard for RGBW & Only Option for RGBWCLA)
30	30°	45	45°	15x60	15°x60°		
45	45°	15x60	15°x60°				
60	60°						
10x60	10°x60°						

PRODUCT CODE:

EXAMPLE: VEX - POWER - GRAZE - 200 - 2700K - 1000mm - 200W - IP66 - 60 - DMX - 512

ACCESSORIES

PART NO.	DESCRIPTION	PRODUCT CODE
025073	Integrated Snoot/Hood	VEX-POWER-GRAZE-200-ACCESSORY-SNOOT
025074	Anti-Glare Honeycomb Louvre	VEX-POWER-GRAZE-200-ACCESSORY-HONEYCOMB-LOUVRE

STANDARDS & CERTIFICATIONS

Compliance

Standard Marks

UK
CA CE

Environmental Suitability

Recyclable

Aluminium body recyclable where facilities exist.

Reliability

Quality Assurance

All products are carefully selected and tested by Vexica so that you can be assured of their quality, function and reliability.

Warranty & Terms

Terms & Conditions

Warranty Registration

For details on our warranty and business terms, please click or scan the QR Code.

Notes