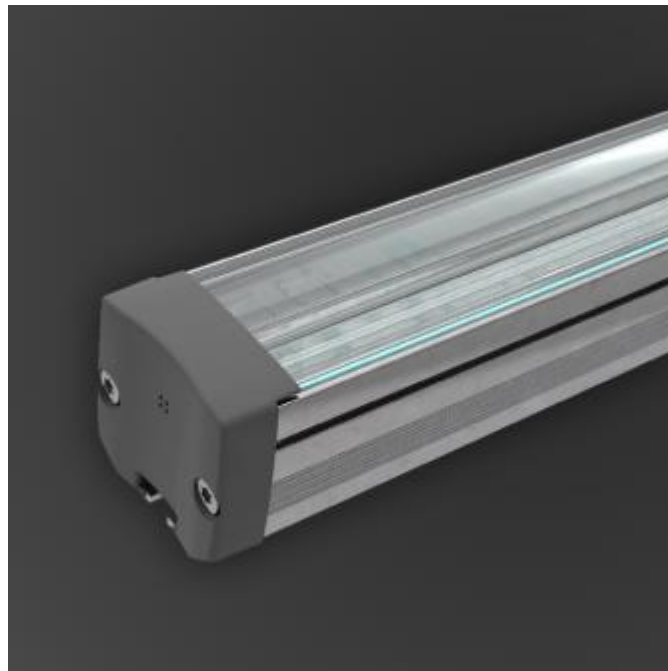




OPTI-GRAZE

On-Site Manual



Please ensure you have read the following instructions thoroughly and can undertake the required actions before commencing installation.

If you have any queries, please consult our Technical Support Department before proceeding.

VERSION A

THE VEXICA GROUP LIMITED

TYPHOON HOUSE, MOXON WAY, SHERBURN-IN-ELMET, LEEDS, LS25 6FB

Contents

Scope.....	2
Revision History	2
Installation Instructions:	3
Adjustable Spring Clips:.....	3
Wiring.....	5
Single Colour	6
Tunable White.....	6
RGB.....	7
RGB Dynamic.....	7
RGBW	8
Extending Vexica Standard Input Cables	9
Cautions:	10

Scope

This manual will detail the installation of OPTI-GRAZE.

Revision History

Rev	Date	Comment	Author
A	08/07/2025	Document created	MA
B			
C			

Approved By

Person	Date	Name
Technical Manager	08/07/2025	Leon Gibson

Installation Instructions:

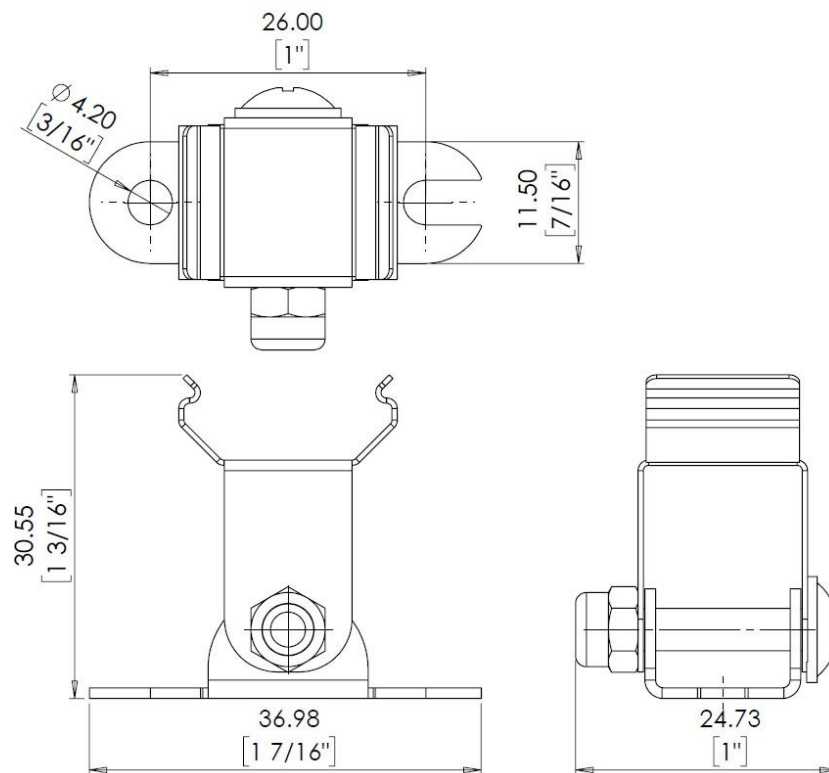
Please read these instructions carefully before installation and make sure you fully understand them. Also, pay attention to how the luminaire is wired. If you require any further guidance, please contact Vexica.

Adjustable Spring Clips:

Fix adjustable bracket to the required surface using appropriate screws (Vexica do not provide these as the type and size depends on the surface luminaire is mounted to). Ensure the mounting brackets are installed in line with each other to enable the product to be clipped in quickly. Use at least two Brackets with luminaries one meter and under and three brackets if the luminaire is over one meter.



Press the Fitting into the Spring Clips Ensure that the Fitting is pressed firmly into the bracket to ensure the clip engages.



Connect fittings using the connectors ensure that the last Fitting in a 'String' is terminated to preserve the product's IP Rating. Connect a starter cable to the first Fitting (see Page Nine for more wiring information).



WARNING! Risk of electrical shock. Disconnect power before servicing or installation.

ONLY USE VEXICA APPROVED DRIVER

- Please take note of the luminaire and driver ingress protection rating when deciding the location.
- Make sure all connections made are tight, with no loose strands and with appropriate IP rated connectors and terminators if applicable.
- Do not reverse polarity.
- Always allow enough slack in the supply cable to remove the luminaire from its position for further maintenance.
- Make sure the supply cable is not in contact with any sharp objects.
- To prevent the ingress of moisture through the cable, do not allow rain/moisture to contact the exposed end of the cable or open connectors for any period.

<u>Power/m version</u>	<u>Max Chain Length</u>
6W	5m
10W	5m
15W	4.8m

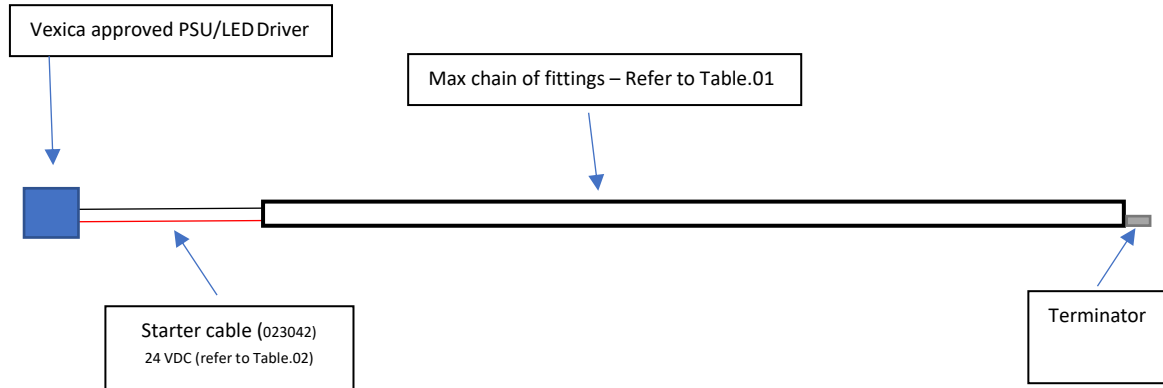
Table.01

Securely mount PSU/LED driver and connect starter cable following the colour coding:

Single Colour

Wire Colour	Function
Red	+24 VDC
Black	GND

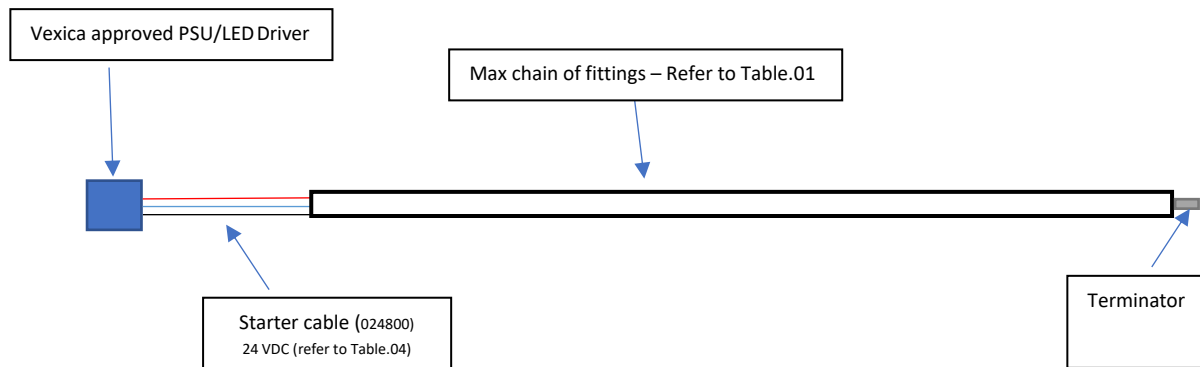
Table.02



Tunable White

Wire Colour	Function
Red	+24 VDC
White	Channel 2
Green	Channel 1

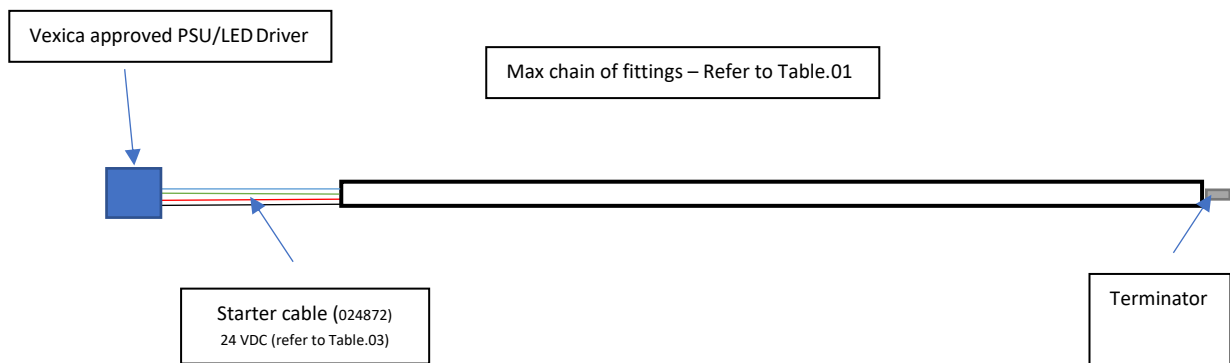
Table.03



RGB

Wire Colour	Function
Red	RED GND
Green	GREEN GND
Blue	BLUE GND
Black	+24 VDC

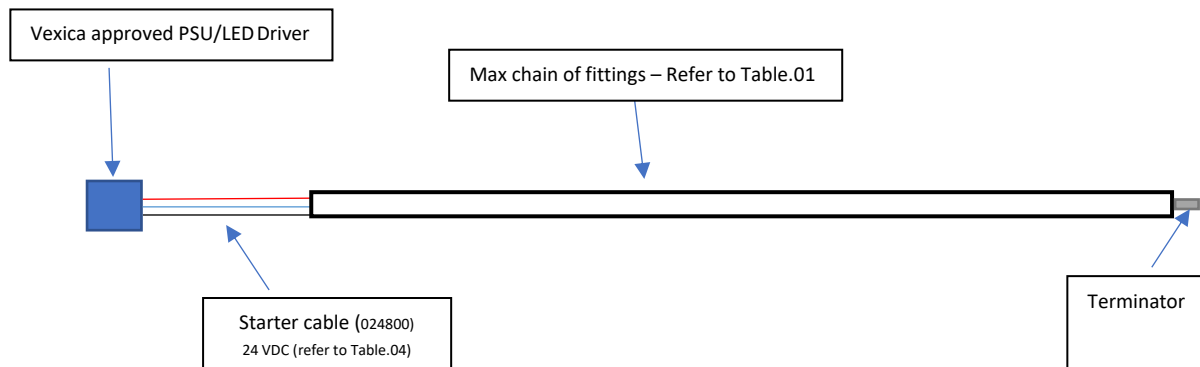
Table.04



RGB Dynamic

Wire Colour	Function
Red	+24 VDC
White	Data
Green	GND

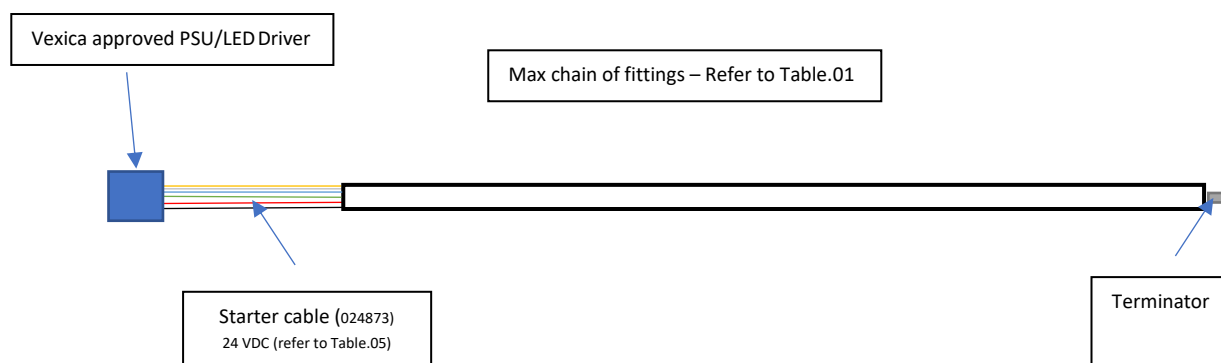
Table.05



RGBW

Wire Colour	Function
Red	RED GND
Green	GREEN GND
Blue	BLUE GND
Yellow	WHITE GND
Black	+24 VDC

Table.06



ALWAYS TERMINATE THE END OF A CHAIN TO RETAIN IP RATING

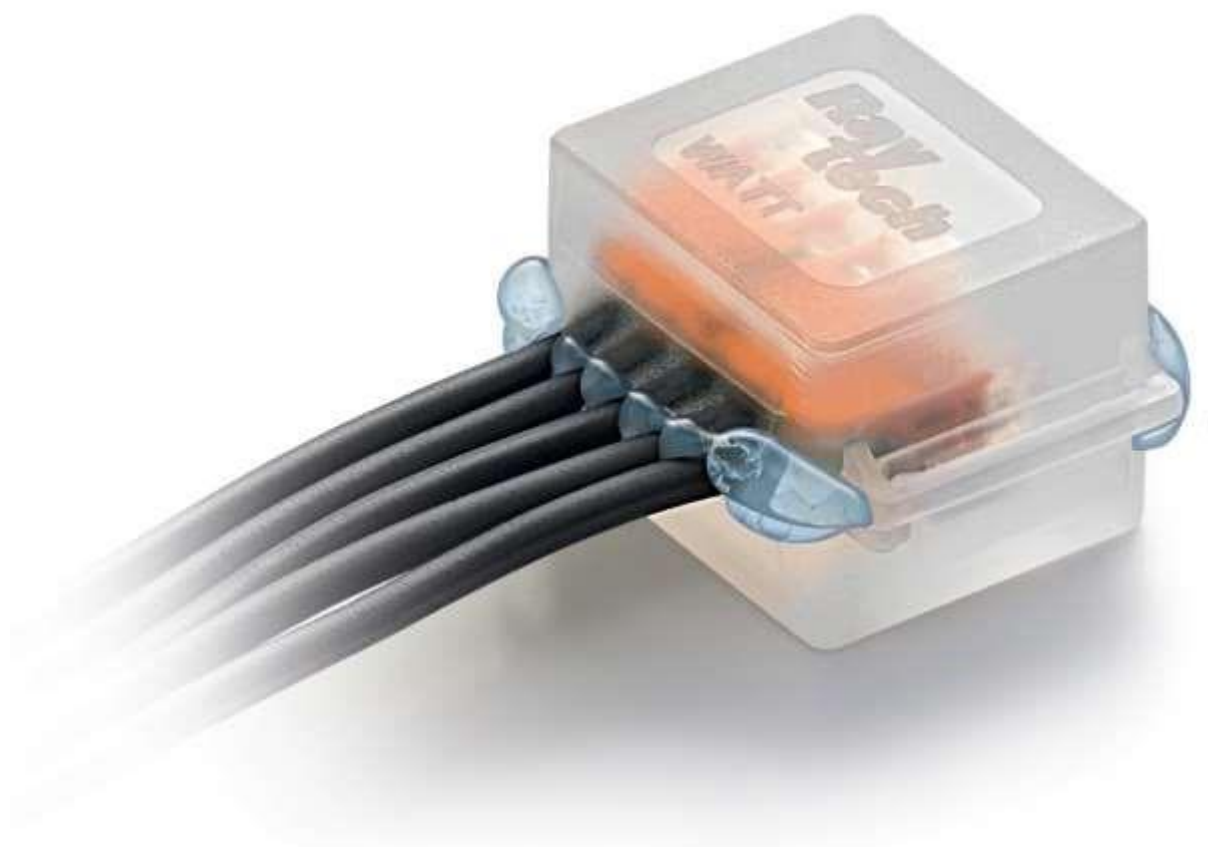
DO NOT REVERSE POLARITY

Extending Vexica Standard Input Cables

When extending cables or making any connections on-site, always ensure the connection has an appropriate IP rating.

Vexica recommends that the starter cables are linked to extensions cables with gel boxes. When extending sheathed cables, ensure that the outer sheath is encased in the gel box to retain the IP rating.

Do Not extend Dynamic starter cables without using a Vexica approved Transmitter/Receiver module to ensure smooth playback of data.



For more details, visit: <http://www.raytech.it/catalogo/en/gel-box-line.pdf>

Cautions:

PLEASE TAKE NOTE OF LUMINAIRE AND DRIVER INGRESS PROTECTION RATING WHEN DECIDING LOCATION

MAKE SURE ALL CONNECTIONS MADE ARE TIGHT WITH NO LOOSE STRANDS AND WITH AN APPROPRIATE IP RATING.

DO NOT HOT-PLUG OR REVERSE POLARITY.

ALWAYS ALLOW SUFFICIENT SLACK ON THE SUPPLY CABLE TO REMOVE THE LUMINAIRE FROM ITS POSITION FOR ANY FURTHER MAINTENANCE

MAKE SURE THE SUPPLY CABLE IS NOT IN CONTACT WITH ANY SHARP OBJECTS; DO NOT LEAVE CABLE OR ANY CONNECTOR EXPOSED TO RAIN/MOISTURE FOR ANY PERIOD

CAUTION!

- *All images are representative and may not be of the product supplied, depending on options specified when ordering.*
- *Avoid staring directly into the light beam.*
- *The product should be installed by a certified electrician and follow local regulations.*
- *Take extreme care when working with mains voltages.*
- *There are no user-serviceable parts inside this Unit. Do not attempt any repairs yourself. Doing so will void your manufactures warranty.*
- *During operation, the housing may become hot. Avoid touching the Unit with bare hands while in use.*
- *Do not allow the product to operate in ambient temperatures above the maximum ambient stated on the datasheet; doing so will void any warranty.*
- *Do not use aggressive cleaning agents! Any warranty will not cover any chemical damage to the seals.*
- **DO NOT "HOTPLUG" THE LED FITTINGS OR DRIVERS, AS THIS WILL INVALIDATE THE WARRANTY!**