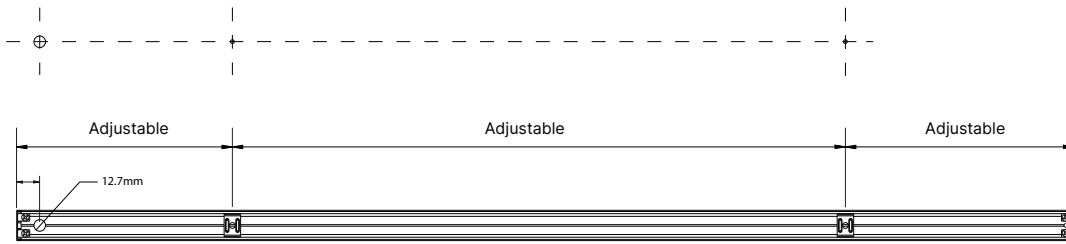


## Surface Mount

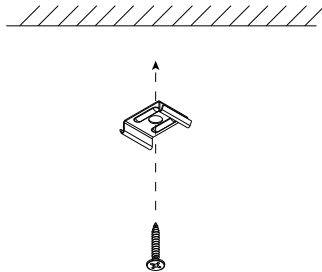
### What to Know

Risk of fire and electrical shock. Installation requires knowledge of electrical systems and should be installed by a qualified electrician. If not qualified, **DO NOT ATTEMPT INSTALLATION.**

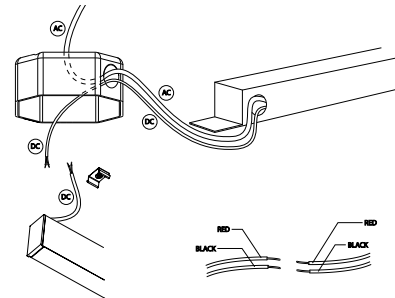
- 1 Mounting clips are adjustable. Locate a secured stud when possible for each bracket. Using a straight edge, mark the locations for each mounting clip.



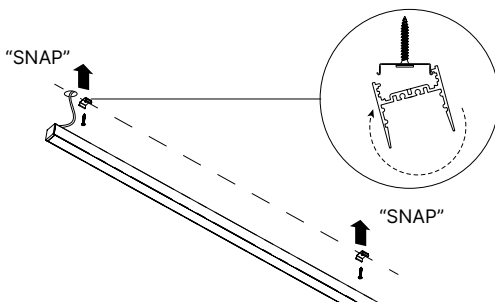
- 2 Secure the mounting clips to the mounting surface with the appropriate hardware.



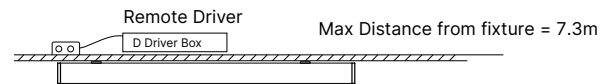
- 3 Locate and install the remote driver box. Raise the fixture to the mounting surface and connect the wires to an approved power source or Driver Box. Refer to the wiring diagram.



- 4 Raise the fixture to the mounting surface and engage the mounting clips. The fixture will click when properly seated.



- 5 Final installation. Refer to page 2 for wiring diagram.



### Care Instructions:

Wipe with a soft cloth only. Always avoid using harsh chemicals and/or cleaners.

## Wiring Diagram

### Driver

