

INSTALLATION GUIDE FOR **FLEXI-MINILINE**

VEX-FLEXI-MINILINE



Please ensure you have read the following instructions thoroughly and can undertake the required actions before commencing installation.

If you have any queries, please consult the Vexica Technical Support Department before proceeding.

Contents

Contents.....	2
Scope.....	2
Revision History	2
Installation Instructions:	3
Tape Installation.....	3
Bracket Installation	5
Led Ready Profile Installation	6
Electrical Installation Instructions:.....	7
Wiring Information	8
Single Colour	8
RGB.....	9
RGB Dynamic.....	9
Extending Vexica Standard Input Cables	10
Cautions:	11

Scope

This manual will detail the installation of VEX-FLEXI-MINILINE luminaires

Revision History

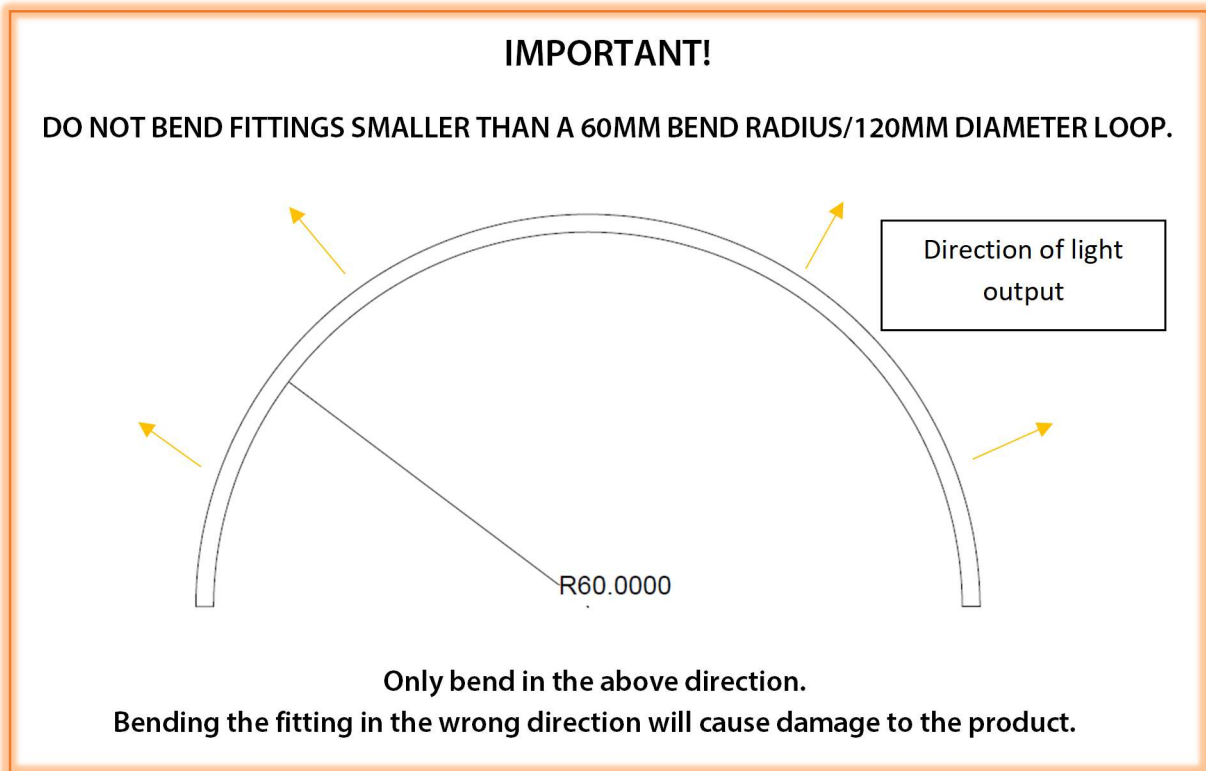
Rev	Date	Comment	Author
A	14/03/2019	Document created	JP

Approved By

Person	Date	Signature
Technical Manager		

Installation Instructions:

Please read these instructions carefully before installation and make sure you fully understand them. Pay attention to how the luminaire is wired. If you require any further guidance, please contact Vexica.



Tape Installation

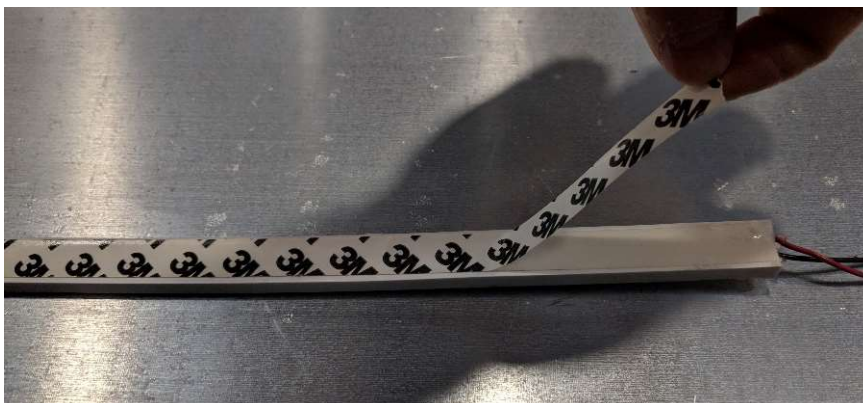
Clean the Surface or aluminium profile thoroughly with isopropyl alcohol or equivalent to ensure proper adhesion. Allow this to dry properly.



Once the surface is free from dirt and grease, apply a suitable 3M double sided tape to the reverse of the fitting.



Peel the backing off the double-sided tape and adhere to the desired surface. While adhering a pressure of 10-15 N/CM² only is to be applied.



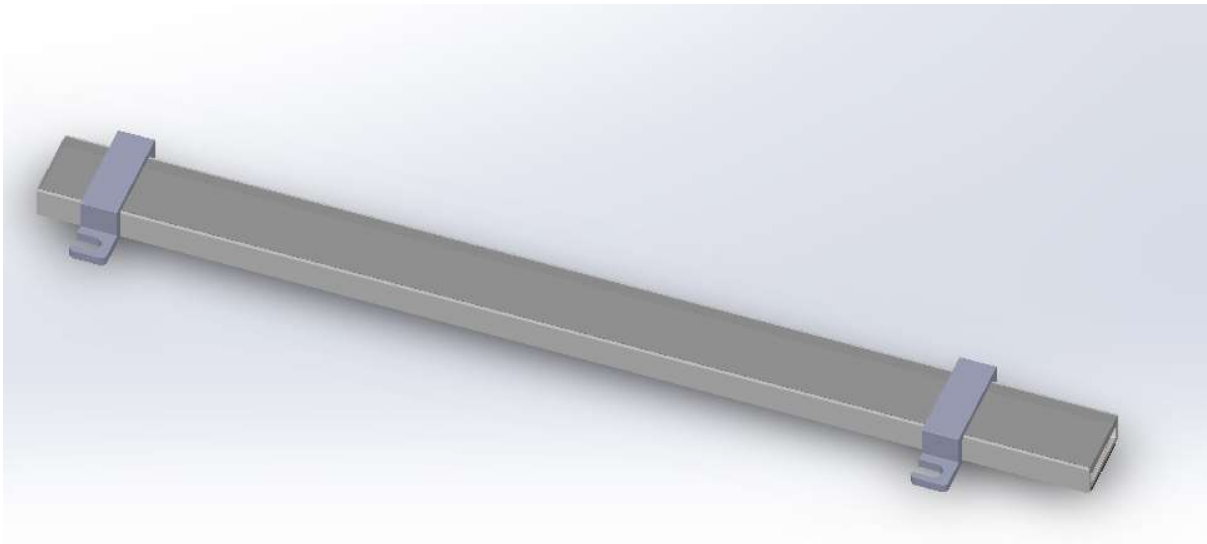
Bracket Installation



Part Code:005601

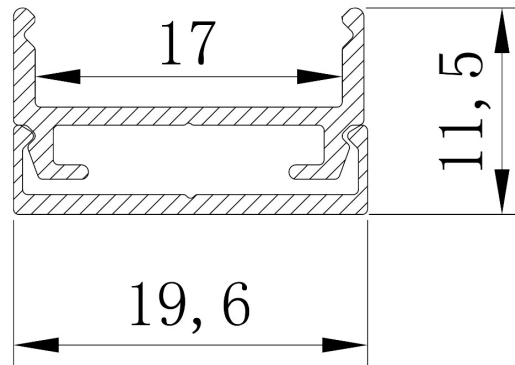
Use the bracket to clamp the VEX-FLEXI-MINILINE

Using a suitable 3M double-sided tape applied as above. Fix the VEX-FLEXI-MINILINE to the desired surface. Use up to six brackets per metre of light fittings depending on the bend radius (minimum 60mm) and site requirements.

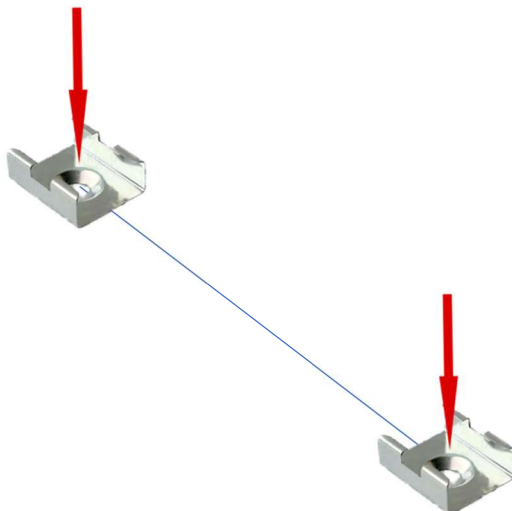


Led Ready Profile Installation

LED profile installation is achieved by first sticking the VEX-FLEXI-MINILINE into the profile using the tape installation method above, ensuring to clean the profile. Then use the supplied profile brackets/clips to fix the Luminaire to the desired surface.



Fix mounting clips to the required surface using appropriate screws (Vexica do not provide these as the type and size depends on the surface luminaire is mounted to). Ensure the mounting brackets are installed in line with each other to enable the product to be clipped in easily. Press the luminaire into the brackets, use at least two brackets with luminaires one meter and under and three brackets if the luminaire is over one meter.



Electrical Installation Instructions:

WARNING! Risk of electrical shock. Disconnect power before servicing or installation.

ONLY USE VEXICA APPROVED DRIVER

- Please take note of luminaire and driver ingress protection rating when deciding location.
- Make sure all connections made are tight, with no loose strands and with appropriate IP rated connectors.
- Do not reverse polarity.
- Always allow sufficient slack on the supply cable to remove the luminaire from its position for any further maintenance.
- Make sure supply cable is not in contact with any sharp objects.
- Do not leave cable or any connector exposed to rain/moisture for any period.
- Do not exceed the maximum fitting chain length of 4.8m.
- **Do not exceed the maximum power level of the fixture. When running channels concurrently, they must be limited so the total power does not exceed the 15W/m limit.**
 - **For TW products, the white channels are capable of running at 15W/m each.**

Wiring Information

<u>Power/m version</u>	<u>Max Chain Length</u>
6W	4.8m
10W	4.8m

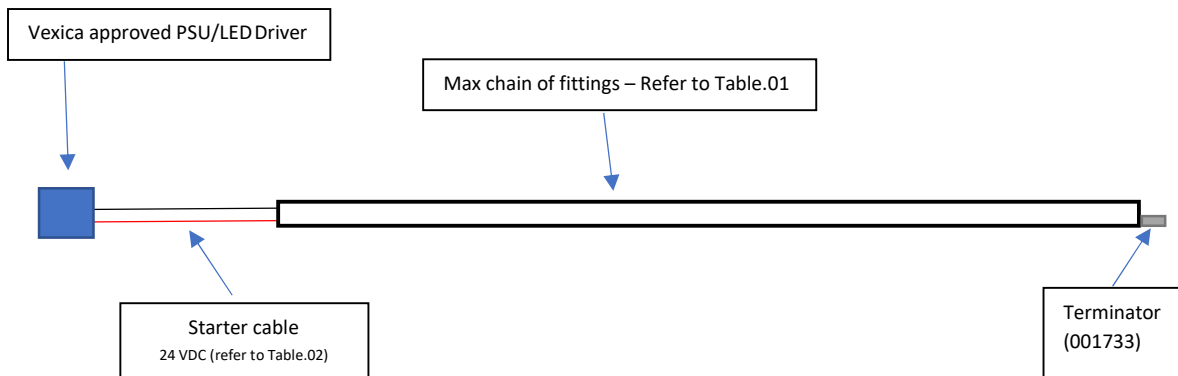
Table 1

Securely mount PSU/LED driver and connect starter cable following the colour coding:

Single Colour

Red	+24 VDC
Black	GND

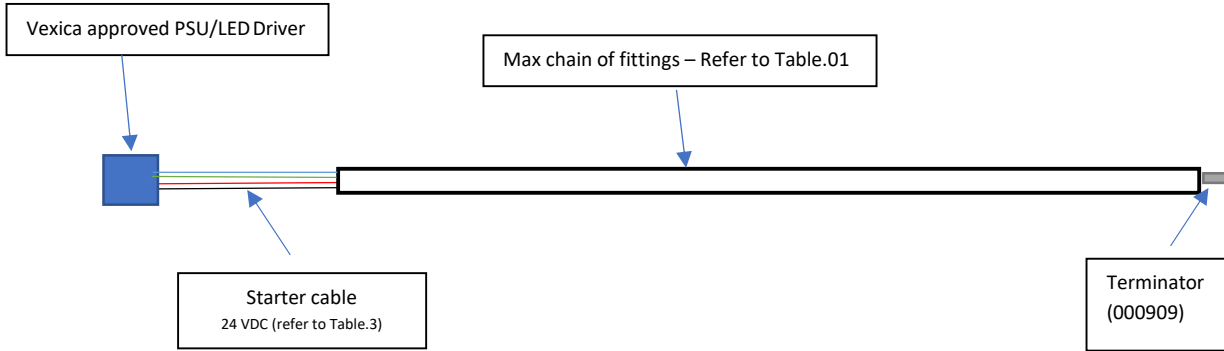
Table 2



RGB

Red	RED GND
Green	GREEN GND
Blue	BLUE GND
Black	+24 VDC

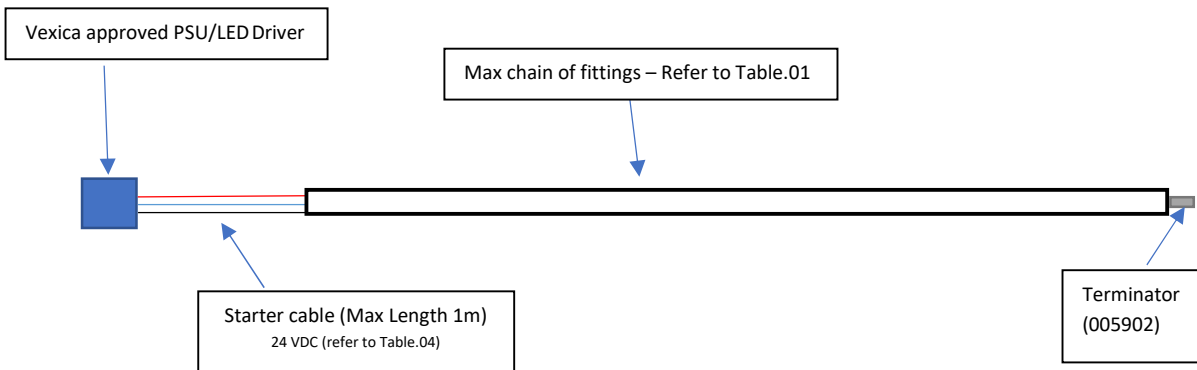
Table 3



RGB Dynamic

Red	+24 VDC
White	Data
Black	-GND

Table 4



ALWAYS TERMINATE THE END OF A CHAIN TO RETAIN IP RATING

2 WAY TERMINATOR – VEXICA PART NUMBER: 001733

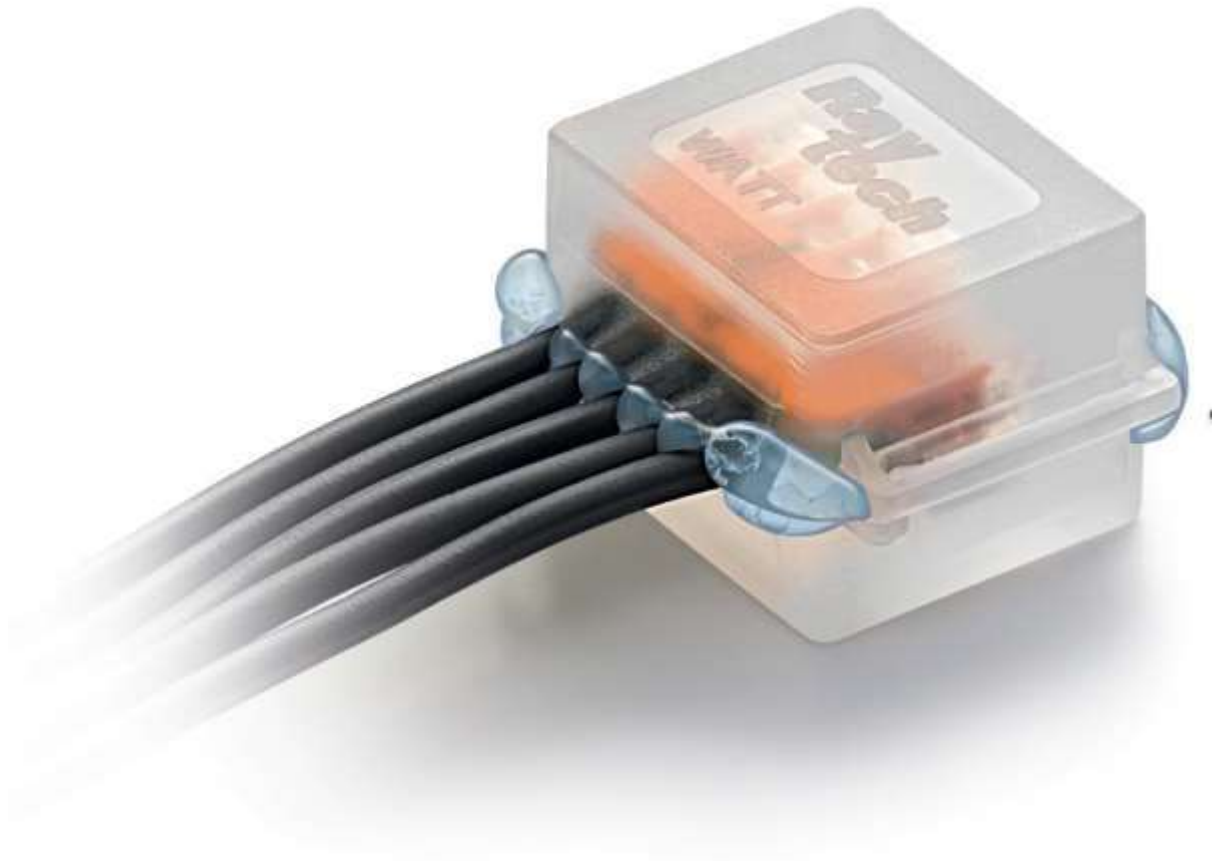
3 WAY TERMINATOR – VEXICA PART NUMBER: 005902

4 WAY TERMINATOR – VEXICA PART NUMBER: 000909

Extending Vexica Standard Input Cables

When extending cables or making any connections on site always ensure the connection has an appropriate IP rating.

Vexica recommends the starter cables are linked to extensions cables with gel boxes. When using extending sheathed cables ensure that the outer sheath is encased in the gel box to retain the IP rating.



For more details visit: <http://www.raytech.it/catalogo/en/gel-box-line.pdf>

Cautions:

- PLEASE TAKE NOTE OF LUMINAIRE AND DRIVER INGRESS PROTECTION RATING WHEN DECIDING LOCATION
- MAKE SURE ALL CONNECTIONS MADE ARE TIGHT WITH NO LOOSE STRANDS AND WITH APPROPRIATE IP RATING.
- DO NOT HOT PLUG OR REVERSE POLARITY.
- ALWAYS ALLOW SUFFICIENT SLACK ON THE SUPPLY CABLE TO REMOVE LUMINAIRE FROM ITS POSITION FOR ANY FURTHER MAINTENANCE
- MAKE SURE SUPPLY CABLE IS NOT IN CONTACT WITH ANY SHARP OBJECTS DO NOT LEAVE CABLE OR ANY CONNECTOR EXPOSED TO RAIN/MOISTURE FOR ANY PERIOD.

CAUTION!

- *All images are representative and may not be of the actual product supplied depending on options specified when ordering.*
- *Avoid staring directly into the light beam.*
- *A certified electrician should install the product, following local regulations.*
- *Take extreme care when working with mains voltages.*
- *There are no user serviceable parts inside this unit. Do not attempt any repairs yourself, doing so will void your manufactures warranty.*
- *During operation, the housing may become hot, avoid touching the unit with bare hands while in use.*
- *Do not allow the product to operate in ambient temperatures above the maximum ambient stated on the datasheet; doing so will void any warranty.*
- *Do not use aggressive cleaning agents! Warranty will not cover any chemical damage to the luminaire.*
- **DO NOT "HOT PLUG" THE LED FITTINGS OR DRIVERS AS THIS WILL INVALIDATE THE WARRANTY!**