

FLEXI-MINILINE



Low profile Flexible Polyurethane Linear LED Luminaire
in a Choice of Static and Dynamic Colour Options
Top Bending | Outdoor & Indoor Use



Remote Driver

Features & Benefits

Wide Range of LED Selections

Static White, Tunable White, RGB & RGB Dynamic options are available at CRI 80, 90 & 95 CRI. For availability per model, please see the relevant section of this guide.

Resin Encapsulation Technology

Luminaires encapsulated in polyurethane resin to ensure environmental robustness and longevity.

Semi-Diffuse Light Output

An opal polyurethane resin resin gives a partially diffused output.

Choose Your Length

Available in a wide range of lengths upto 4.8m with one driver powering up to 9.6m (6W/m only).

Customisable

Speak to your Vexica representative about any specific requests you have for your project.

Compliance

UKCA, CE, IP67

5-Year Warranty

Standard 5-year warranty, L90 (Static White) @ ~50,000 hours.



LIGHT OUTPUT INFORMATION

Efficacy (lm/W)

Fixture Type	Optic Type	Power Output	Static White				Tunable White ¹			RGB ²			
			2500K	2700K	3000K	4000K	2500K	4500K	Mid-Range	Max (White)	Red	Green	Blue
Flexi Miniline	Diffuse	6 W/m	60	60	62	65	-	-	-	-	-	-	-
		10 W/m	60	60	62	65	-	-	-	-	-	-	-
		15 W/m	60	60	62	65	60	65	63	34	22	60	12

Nominal Lumen Output (lm/m)

Fixture Type	Optic Type	Power Output	Static White				Tunable White ¹			RGB ²			
			2500K	2700K	3000K	4000K	2500K	4500K	Mid-Range	Max (White)	Red	Green	Blue
Flexi Miniline	Diffuse	6 W/m	360	360	372	390	-	-	-	-	-	-	-
		10 W/m	600	600	620	650	-	-	-	-	-	-	-
		15 W/m	900	900	930	975	900	975	945	510	110	300	60

The values above are specified at CRI = 80

For CRI = 90 reduce by 10%; for CRI = 95 reduce by 20%

If the data that you require is missing, please contact your Vexica representative

¹ Tunable White consists of 2 channels (2700K & 5000K) and all tuned output will result from a blend of both and shall not exceed the maximum luminaire power output.

The Mid-Range efficacy value is calculated with each channel sharing 50% of the maximum output power.

² RGB consists of 3 channels (Red, Green & Blue), each at 33% of the nominal power output. The 'Max (White)' value is taken when all channels are at 100% and the fixture is drawing the full power output stipulated.

Vexica run regular development cycles, continuously optimising and balancing product specifications to best suit our customers. All information therefore, is intended as a guide and specifications may change on occasion without notice or announcement. Technical data is measured under controlled conditions, expected performance is within +/- 10% of advertised figures. Information provided above is intended as a description of the product and shall not be used in the form of any contract.

ELECTRICAL INFORMATION

Power Options	6W/m (Static White Only) 10W/m (Static White Only) 15W/m (All Options ^{1,2})
Input Voltage	24 VDC (23V Min, 25V Max)
Dimmable	Yes
Connection Type	JST JWPF IP67
LED Binning	3 SDCM (White Only)
Maximum Chain Length	9600mm (6W/m Only) 4800mm (10W/m & 15W/m)

PHYSICAL & ENVIRONMENTAL INFORMATION

Housing Colour

White

Finish	Flexible Polyurethane Resin
Ambient Operating Temperature	-10°C to +50°C
Ambient Storage Temperature	-30°C to +85°C
IP Rating	IP67
IK Rating	IK03
Weight	0.104kg/m

LED CCT/COLOUR OPTIONS

STATIC WHITE

2500K, 2700K, 3000K, 4000K



TUNABLE WHITE^a

2500K to 4500K



TUNABLE COLOUR^b

RGB LED Colour Mixing



DYNAMIC COLOUR^c

RGB LED Dynamic Pixels



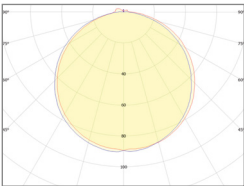
LENGTH (L) OPTIONS

LED Colour	Minimum Length (mm)	Maximum Length (mm)	Length Increments (mm)	Length Options (mm)
White Tunable White	58	4808	50	58, 108, 158, 208, 258, 308, 358, 408, 458, 508, 558, 608, 658, 708, 758, 808, 858, 908, 958, 1008, 1058, 1108, 1158, 1208, 1258, 1308, 1358, 1408, 1458, 1508, 1558, 1608, 1658, 1708, 1758, 1808, 1858, 1908, 1958, 2008, 2058, 2108, 2158, 2208, 2258, 2308, 2358, 2408, 2458, 2508, 2558, 2608, 2658, 2708, 2758, 2808, 2858, 2908, 2958, 3008, 3058, 3108, 3158, 3208, 3258, 3308, 3358, 3408, 3458, 3508, 3558, 3608, 3658, 3708, 3758, 3808, 3858, 3908, 3958, 4008, 4058, 4108, 4158, 4208, 4258, 4308, 4358, 4408, 4458, 4508, 4558, 4608, 4658, 4708, 4758, 4808
RGB RGB Dynamic	108	4808	100	108, 208, 308, 408, 508, 608, 708, 808, 908, 1008, 1108, 1208, 1308, 1408, 1508, 1608, 1708, 1808, 1908, 2008, 2108, 2208, 2308, 2408, 2508, 2608, 2708, 2808, 2908, 3008, 3108, 3208, 3308, 3408, 3508, 3608, 3708, 3808, 3908, 4008, 4108, 4208, 4308, 4408, 4508, 4608, 4708, 4808

BEAMSHAPE

DIFFUSE

All Models



MOUNTING OPTIONS

3M MOUNTING TAPE

Adhesive Tape



ORDER CODE: 009322

RETAINING CLIP

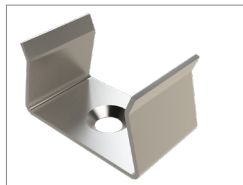
Nylon



ORDER CODE: 011853

FLUSH MOUNT CLIP

Stainless Steel



ORDER CODE: 021006

^aClient must limit luminaire total power to 15W/m. Tunable White consists of 2 channels each individually capable of 15W/m output. When both channels are in use, the combined power output should not exceed 15W/m.

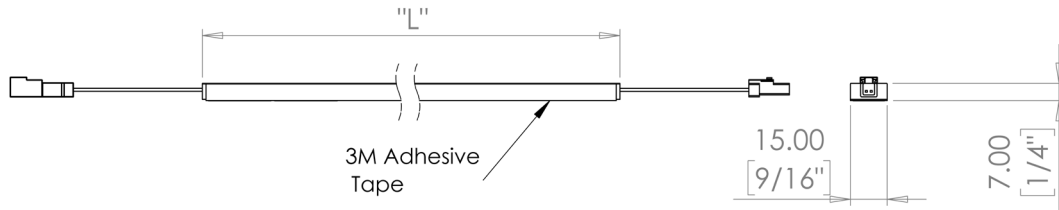
^bEach colour channel represents 5W/m. When all channels are at 100% the luminaire will output at 15W/m.

^cMust be used in conjunction with a Vexica HybridDrive6 driver plus PSU. Max cable length from driver to first fitting is 1m, any extensions will require additional equipment. Contact your Vexica rep for details.

PRODUCT DIMENSIONS

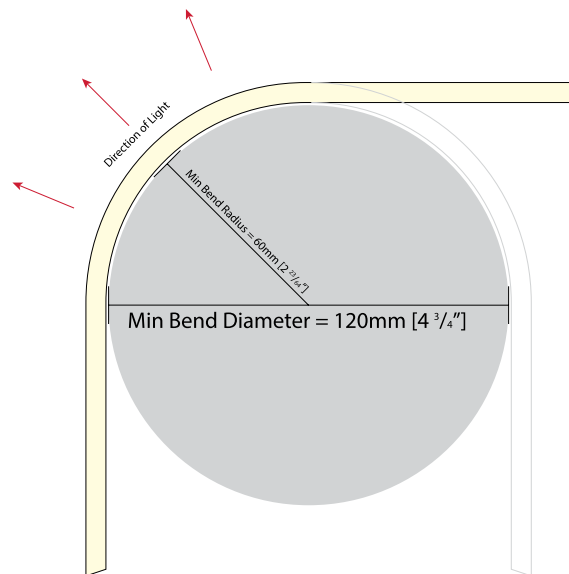
Flexi-Miniline

Top-Bending
Single sided lumination



Maximum Bend Radius

Top bending



FIXTURE ORDERING

Project Name

1) FIXTURE & OUTPUT TYPE

PRODUCT	CCT/LED Colour	
VEX-FLEXI-MINILINE		
Flexi-Miniline is a Low-profile, Flexible, Exterior-Grade Polyurethane, Top-bending Linear LED Luminaire.	2500K 2700K 3000K 4000K TW RGB RGB-DYN	2500K 2700K 3000K 4000K Tunable White (2500K to 4500K) Tunable RGB Dynamic RGB

2) LUMINAIRE LENGTH (Select For Chosen Type & CCT/LED Colour)

LENGTH

	WHITE & TUNABLE WHITE	RGB & RGB DYNAMIC
X	Specify Xmm 50mm Intervals + 8mm Minimum = 58mm Maximum = 4808mm	Specify Xmm 100mm Intervals + 8mm Minimum = 108mm Maximum = 4808mm

3) FIXTURE POWER, IP RATING & BEAM PATTERN

POWER OPTION	IP RATING	BEAM PATTERN
	IP67	DIF
6W 10W 15W	IP67 Water & Dust Proof Suitable for outdoor use	DIF Diffuse
6W/m (Static White Only) 10W/m (Static White Only) 15W/m (All Options)		

PRODUCT CODE:

EXAMPLE: VEX - FLEXI - MINILINE - 2500K - 4808 - 6W - IP67 - DIF

STANDARDS & CERTIFICATIONS

Compliance

Standard Marks



Environmental Suitability

Sustainability

Responsibly manufactured from materials that are free from 'Red List' chemicals

Recyclable

Not Recyclable

Reliability

Manufacturing

All Vexica products are manufactured in our UK-based factory using components sourced from internationally recognised 'tier 1' suppliers

Quality Assurance

Each product is designed and manufactured for reliability and each batch undergoes through quality assurance testing

Warranty & Terms

[Terms & Conditions](#)

[Warranty Registration](#)

For details on our warranty and business terms, please click or scan the QR Code.

Notes

