

FLEXI-LINE S



Flexible Polyurethane Linear LED Luminaire in a Choice of Static and Dynamic Colour Options
Side Bending | Outdoor & Indoor Use



FLEXI-LINE-S-RGBW, M&S, Stevenage, UK



Features & Benefits

Continuous Linear Light

Chamfered ends allow for bottom or side entry cable management, and a seamless appearance.

Wide Range of LED Selections

Static White, Tunable White, RGB, RGB Dynamic & RGBW options are available at CRI 80, 90 & 95 CRI. For availability per model, please see the relevant section of this guide.

Resin Encapsulation Technology

Luminaires encapsulated in polyurethane resin to ensure environmental robustness and longevity.

Linear Homogenous Output

Diffused opal finish for homogenous appearance.

Choose Your Length

Available in a wide range of lengths upto 4.8m with one driver powering up to 9.6m (6W/m only).

Customisable

Speak to your Vexica representative about any specific requests you have for your project.

Compliance

UKCA, CE, UL, IP67

5-Year Warranty

Standard 5-year warranty, L90 (Static White) @ >50,000 hours.



LIGHT OUTPUT INFORMATION

Efficacy (lm/W)

Fixture Type	Power Output	Static White				Tunable White ¹				RGB ²			RGBW ³			
		2500K	2700K	3000K	4000K	2500K	4500K	Mid-Range	Max (White)	Red	Green	Blue	Red	Green	Blue	3000K
Flexi-Line S	6 W/m	41	41	43	45	-	-	-	-	-	-	-	-	-	-	-
	10 W/m	41	41	43	45	-	-	-	-	-	-	-	-	-	-	-
	15 W/m	41	41	43	45	41	45	43	27	16	41	8	16	41	8	43

Nominal Lumen Output (lm/m)

Fixture Type	Power Output	Static White				Tunable White ¹				RGB ²			RGBW ³			
		2500K	2700K	3000K	4000K	2500K	4500K	Mid-Range	Max (White)	Red	Green	Blue	Red	Green	Blue	3000K
Flexi-Line S	6 W/m	246	246	258	270	-	-	-	-	-	-	-	-	-	-	-
	10 W/m	410	410	430	450	-	-	-	-	-	-	-	-	-	-	-
	15 W/m	615	615	645	675	615	675	645	405	80	205	40	80	205	40	645

The values above are specified at CRI = 80

For CRI = 90 reduce by 10%; for CRI = 95 reduce by 20%

If the data that you require is missing, please contact your Vexica representative

¹Tunable White consists of 2 channels each capable of the maximum luminaire output of 15W/m. Lumen values for 2700K & 5000K are taken with the respective channel at 100%. The 'Mid-Range' value is taken with each channel at 50% and the combined total output being 15W/m.

²RGB consists of 3 channels (Red, Green & Blue), each capable of outputting 5W/m. The 'Max (White)' value is taken when all channels are at 100% and the fixture is drawing the maximum total luminaire output of 15W/m.

³RGBW consists of 4 channels. The Red, Green and Blue channels can each have a maximum power output of 5W/m and the 3000K white has a maximum output of 15W/m. In operation it must be ensured that the total luminaire output does not exceed 15W/m at any point.

Vexica run regular development cycles, continuously optimising and balancing product specifications to best suit our customers. All information therefore, is intended as a guide and specifications may change on occasion without notice or announcement. Technical data is measured under controlled conditions, expected performance is within +/- 10% of advertised figures. Information provided above is intended as a description of the product and shall not be used in the form of any contract.

ELECTRICAL INFORMATION

Power Options	6W/m (Static White Only) 10W/m (Static White Only) 15W/m (All Options ^{a, b, c, d})
Input Voltage	24 VDC (23V Min, 25V Max)
Dimmable	Yes
Connection Type	JST JWPF IP67
LED Binning	3 SDCM (White Only)
Maximum Chain Length	9600mm (6W/m Only) 4800mm (10W/m & 15W/m)

PHYSICAL & ENVIRONMENTAL INFORMATION

Housing Colour



White

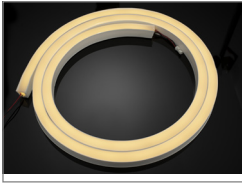


Contact Us for
Special Projects

Finish	Flexible Polyurethane Resin
Ambient Operating Temperature	-10°C to +50°C
Ambient Storage Temperature	-30°C to +85°C
IP Rating	IP67
IK Rating	IK03
Weight	0.350kg/m

LED CCT/COLOUR OPTIONS

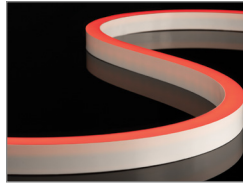
STATIC WHITE
2500K, 2700K, 3000K, 4000K



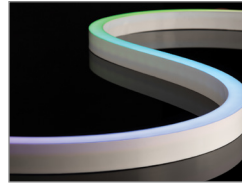
TUNABLE WHITE^a
2500K to 4500K



TUNABLE COLOUR^b
RGB LED Colour Mixing



DYNAMIC COLOUR^c
RGB LED Dynamic Pixels



TUNABLE COLOUR + 3000K^d
RGBW LED Colour Mixing

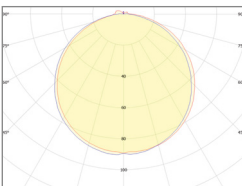


LENGTH (L) OPTIONS

Product	LED Colour	Minimum Length (mm)	Maximum Length (mm)	Length Increments (mm)	Length Options (mm)
S	White Tunable White	67	4817	50	67, 117, 167, 217, 267, 317, 367, 417, 467, 517, 567, 617, 667, 717, 767, 817, 867, 917, 967, 1017, 1067, 1117, 1167, 1217, 1267, 1317, 1367, 1417, 1467, 1517, 1567, 1617, 1667, 1717, 1767, 1817, 1867, 1917, 1967, 2017, 2067, 2117, 2167, 2217, 2267, 2317, 2367, 2417, 2467, 2517, 2567, 2617, 2667, 2717, 2767, 2817, 2867, 2917, 2967, 3017, 3067, 3117, 3167, 3217, 3267, 3317, 3367, 3417, 3467, 3517, 3567, 3617, 3667, 3717, 3767, 3817, 3867, 3917, 3967, 4017, 4067, 4117, 4167, 4217, 4267, 4317, 4367, 4417, 4467, 4517, 4567, 4617, 4667, 4717, 4767, 4817
	RGB RGB Dynamic RGBW	117	4817	100	117, 217, 317, 417, 517, 617, 717, 817, 917, 1017, 1117, 1217, 1317, 1417, 1517, 1617, 1717, 1817, 1917, 2017, 2117, 2217, 2317, 2417, 2517, 2617, 2717, 2817, 2917, 3017, 3117, 3217, 3317, 3417, 3517, 3617, 3717, 3817, 3917, 4017, 4117, 4217, 4317, 4417, 4517, 4617, 4717, 4817

BEAMSHAPE

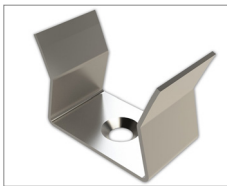
DIFFUSE
All Models



MOUNTING OPTIONS

FLUSH MOUNT CLIP

Stainless Steel



ORDER CODE: 007900

CABLE MANAGEMENT CLIP

Stainless Steel



ORDER CODE: 008981

FLEXI-CHANNEL GUIDE

Stainless Steel



ORDER CODE: 017227

^aClient must limit luminaire total power to 15W/m. Tunable White consists of 2 channels each individually capable of 15W/m output. When both channels are in use, the combined power output should not exceed 15W/m.

^bEach colour channel represents 5W/m. When all channels are at 100% the luminaire will output at 15W/m.

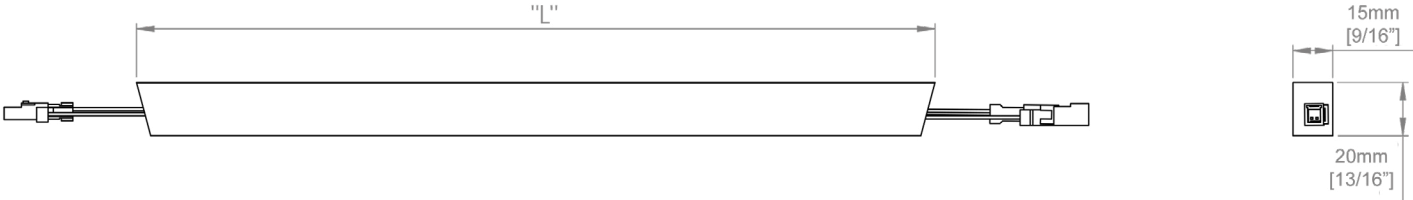
^cMust be used in conjunction with Vexica HybridDrive6 driver plus PSU. Max cable length from driver to first fitting is 1m, any extensions will require additional equipment. Contact your Vexica rep for details.

^dClient must limit RGBW luminaire total power to 15W/m. White channel (15W/m) & RGB channels (3x 5W/m) to be kept to 15W/m combined maximum.

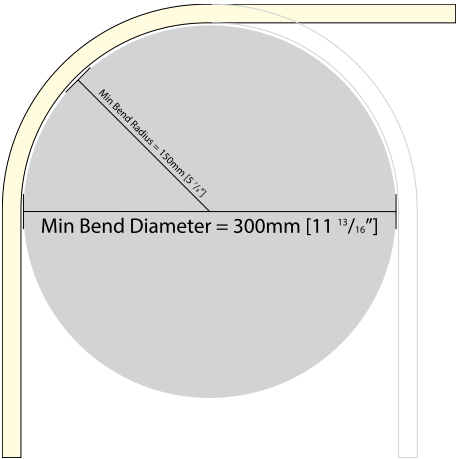
PRODUCT DIMENSIONS

Flexi-Line S

Side-Bending
Single sided lumination



Minimum Bend Radius



FIXTURE ORDERING

Project Name

1) FIXTURE & OUTPUT TYPE

PRODUCT	TYPE	CCT/LED Colour																
VEX-FLEXI-LINE	S																	
Flexi-Line is a Flexible Polyurethane, Exterior-Grade, Linear LED Luminaire.	S Side Bending Single Sided Lumination	<table style="width: 100%; border: none;"> <tr> <td style="width: 50%;">2500K</td> <td>2500K</td> </tr> <tr> <td>2700K</td> <td>2700K</td> </tr> <tr> <td>3000K</td> <td>3000K</td> </tr> <tr> <td>4000K</td> <td>4000K</td> </tr> <tr> <td>TW</td> <td>Tunable White (2500K to 4500K)</td> </tr> <tr> <td>RGB</td> <td>Tunable RGB</td> </tr> <tr> <td>RGB-DYN</td> <td>Dynamic RGB</td> </tr> <tr> <td>RGBW-3000K</td> <td>Tunable RGBW (3000K)</td> </tr> </table>	2500K	2500K	2700K	2700K	3000K	3000K	4000K	4000K	TW	Tunable White (2500K to 4500K)	RGB	Tunable RGB	RGB-DYN	Dynamic RGB	RGBW-3000K	Tunable RGBW (3000K)
2500K	2500K																	
2700K	2700K																	
3000K	3000K																	
4000K	4000K																	
TW	Tunable White (2500K to 4500K)																	
RGB	Tunable RGB																	
RGB-DYN	Dynamic RGB																	
RGBW-3000K	Tunable RGBW (3000K)																	

2) LUMINAIRE LENGTH (Select For Chosen Type & CCT/LED Colour)

LENGTH

WHITE & TUNABLE WHITE

RGB, RGB-DYN, RGBW

<p>S</p> <p>Specify Xmm 50mm Intervals + 17mm Minimum = 67mm Maximum = 4817mm</p>	<p>S</p> <p>Specify Xmm 100mm Intervals + 17mm Minimum = 117mm Maximum = 4817mm</p>
--	--

3) FIXTURE POWER, IP RATING & BEAM PATTERN

POWER OPTION	IP RATING	BEAM PATTERN
6W 10W 15W	IP67	DIF
6W/m (Static White Only) 10W/m (Static White Only) 15W/m (All Options)	IP67 Water & Dust Proof Suitable for outdoor use	DIF Diffuse Homogenous

PRODUCT CODE:

EXAMPLE: VEX - FLEXI - LINE - S - 2700K - 4817 - 15W - IP67 - DIF

STANDARDS & CERTIFICATIONS

Compliance

Standard Marks



Environmental Suitability

Sustainability

Responsibly manufactured from materials that are free from 'Red List' chemicals

Recyclable

Not Recyclable

Reliability

Manufacturing

All Vexica products are manufactured in our UK-based factory using components sourced from internationally recognised 'tier 1' suppliers

Quality Assurance

Each product is designed and manufactured for reliability and each batch undergoes through quality assurance testing

Warranty & Terms

[Terms & Conditions](#)

[Warranty Registration](#)

For details on our warranty and business terms, please click or scan the QR Code.

Notes